

**Introduction**

On the following pages are a variety of lead bend options available for TO-220 packages from Linear Technology Corporation. The special adders, flows, and minimums that have been established for these lead bend options are:

It is important to remember orders for these nonstandard flows require a minimum 90-day notification for cancellation or rescheduling. Also note that special flow orders for U.S. distribution must be approved in advance.

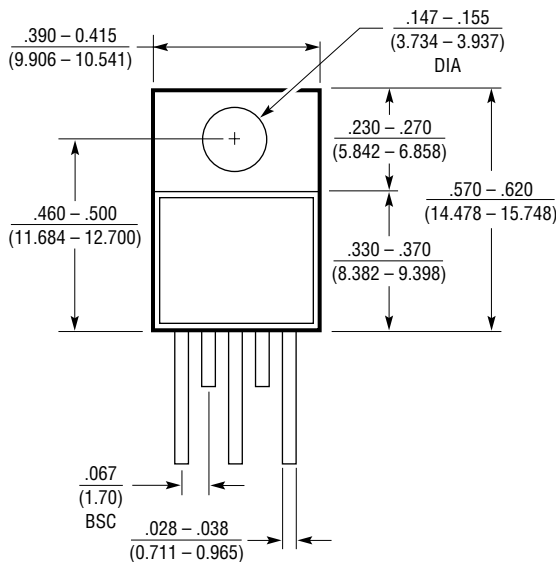
**Flows 30 to 44 Special Lead Bends for TO-220**

(Minimum Order: 1,000 units)

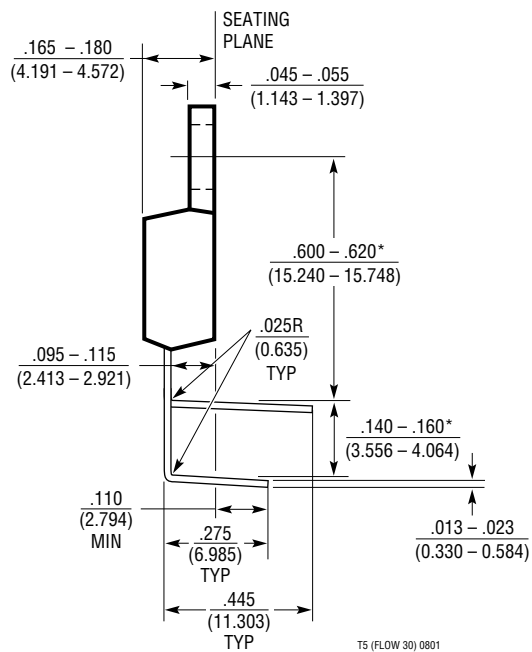
1,000 to 4,999 units	Special lead bends subject to additional charges and order conditions. Contact LTC, Sales/Marketing for more information.
5,000 to 9,999 units	
10,000 to 24,999 units	
> 25,000 units	

**TO-220 5-Lead Package Outline (Flow 30)**

(Reference LTC DWG # 05-08-1490)



\*MEASURED AT SEATING PLANE  
CONTROLLING DIMENSIONS ARE IN INCHES

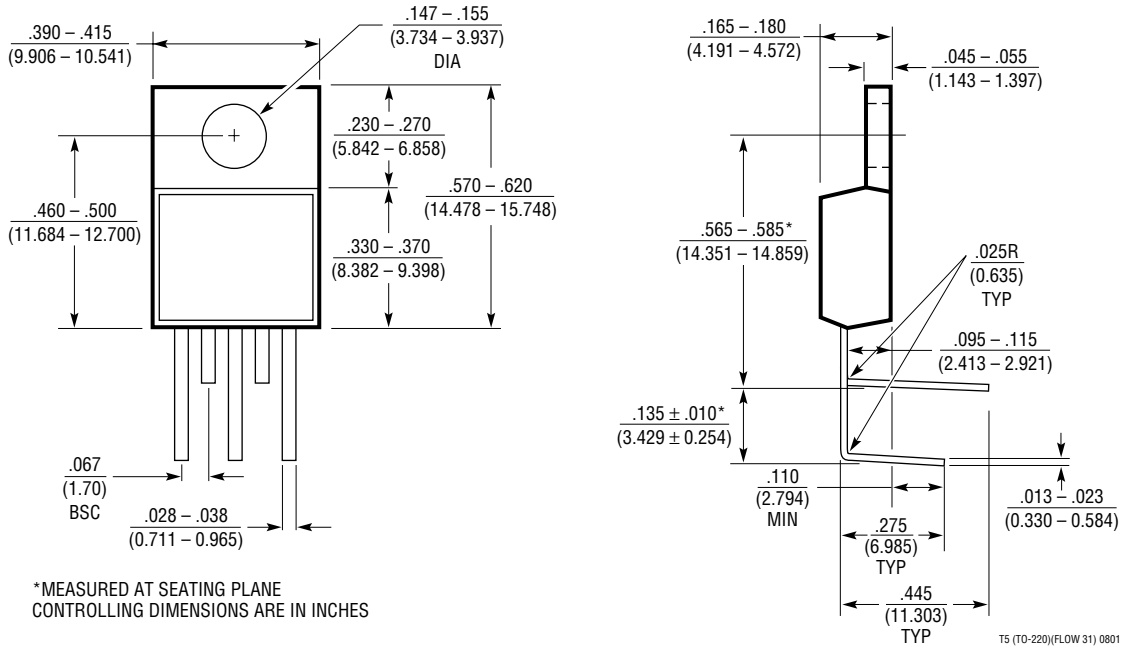


T5 (FLOW 30) 0801

# TO-220 LEAD BEND OPTIONS

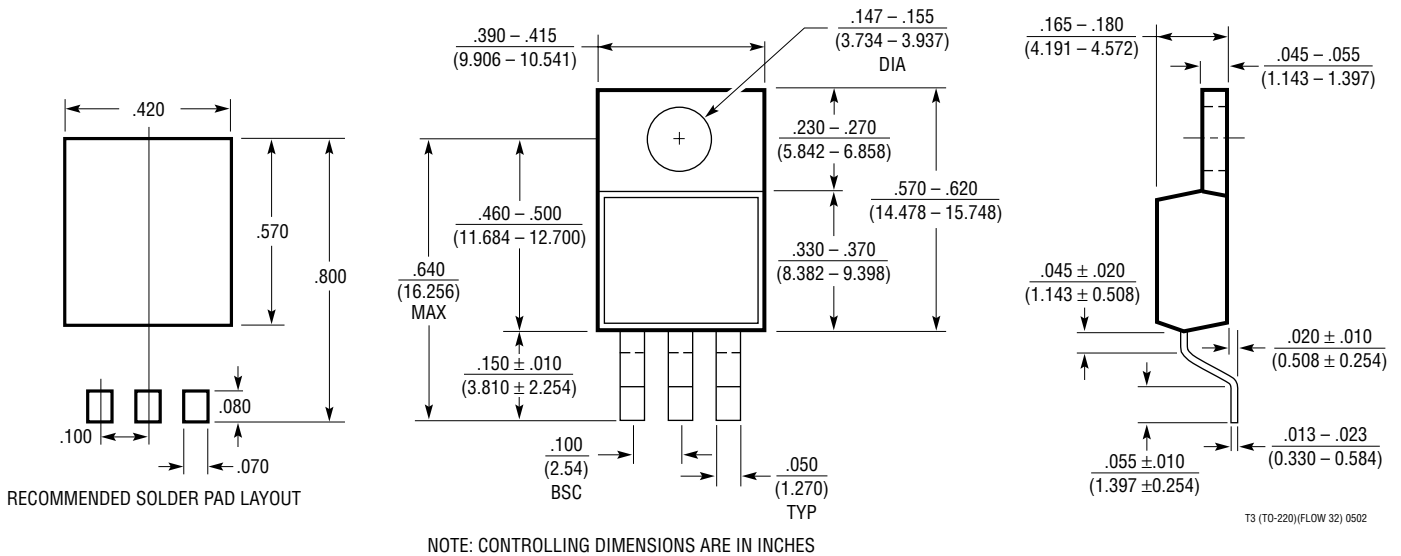
## TO-220 5-Lead Package Outline (Flow 31)

(Reference LTC DWG # 05-08-1491)



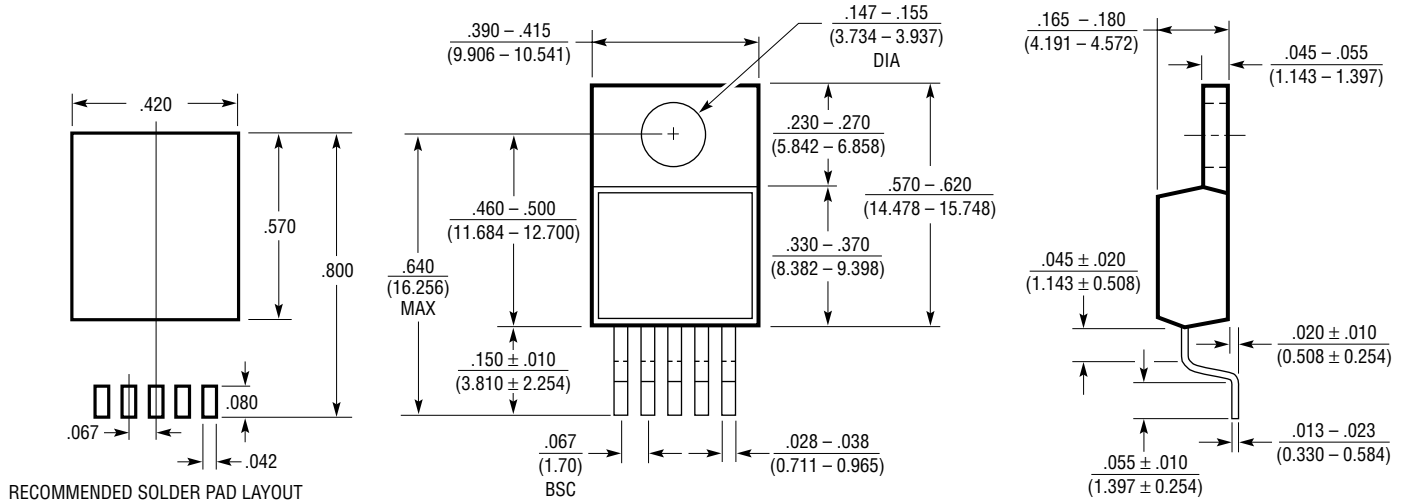
## TO-220 3-Lead Package Outline (Flow 32)

(Reference LTC DWG # 05-08-1492)



# TO-220 LEAD BEND OPTIONS

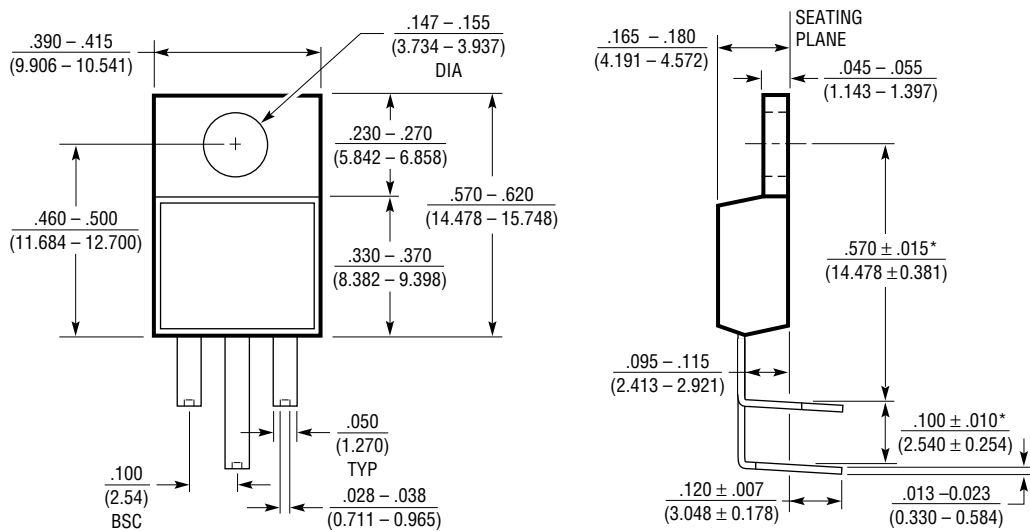
## TO-220 5-Lead Package Outline (Flow 33) (Reference LTC DWG # 05-08-1493)



NOTE: CONTROLLING DIMENSIONS ARE IN INCHES

T5 (FLOW 33) 0502

## TO-220 3-Lead Package Outline (Flow 34) (Reference LTC DWG # 05-08-1494)

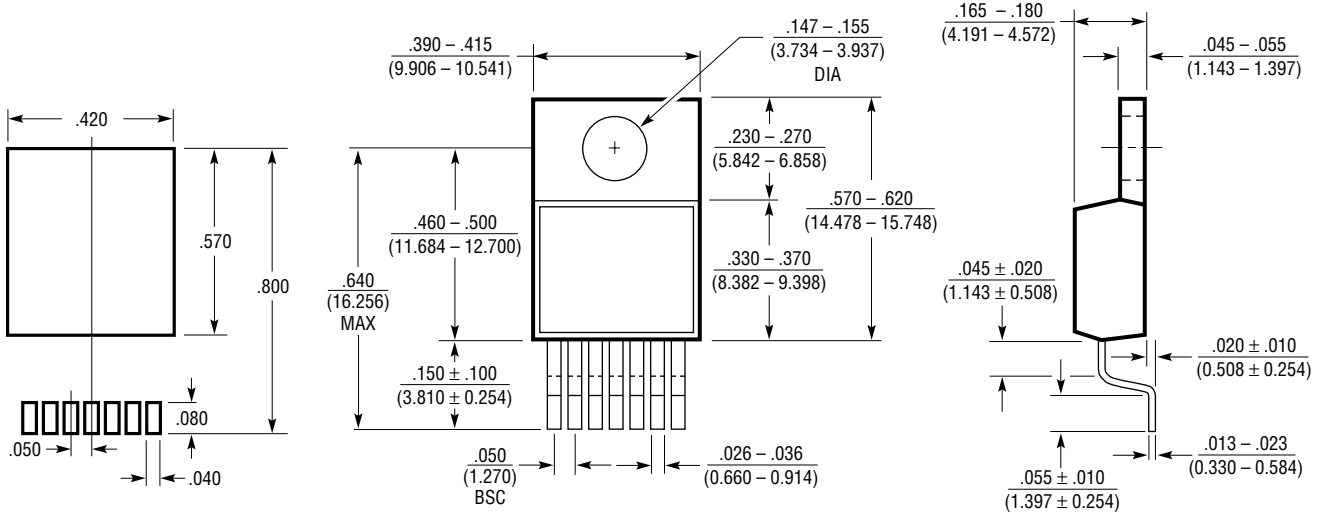


\*MEASURED AT SEATING PLANE  
CONTROLLING DIMENSIONS ARE IN INCHES

T3 (TO-220)/FLOW 34) 0801

# TO-220 LEAD BEND OPTIONS

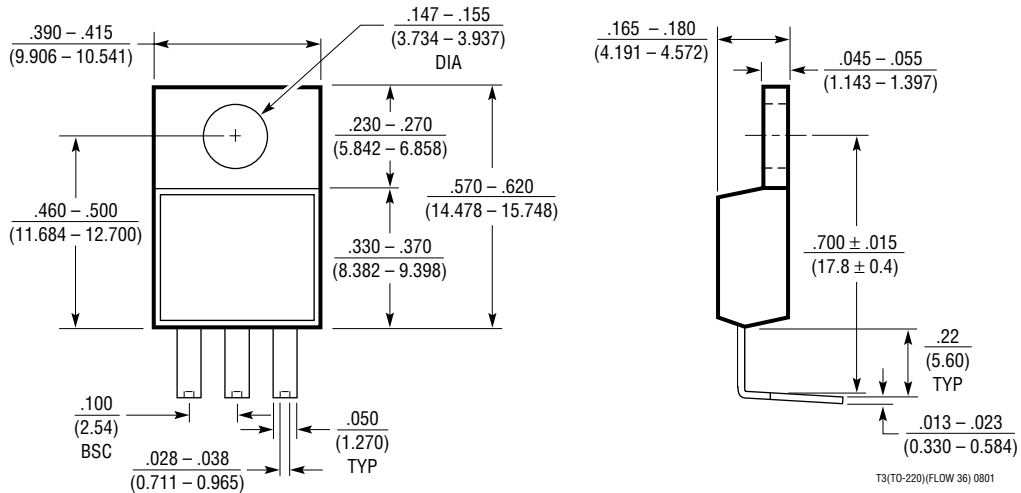
## TO-220 7-Lead Package Outline (Flow 35) (Reference LTC DWG # 05-08-1495)



NOTE: CONTROLLING DIMENSIONS ARE IN INCHES

T7 (TO-220)(FLOW 35) 0502

## TO-220 3-Lead Package Outline (Flow 36) (Reference LTC DWG # 05-08-1496)

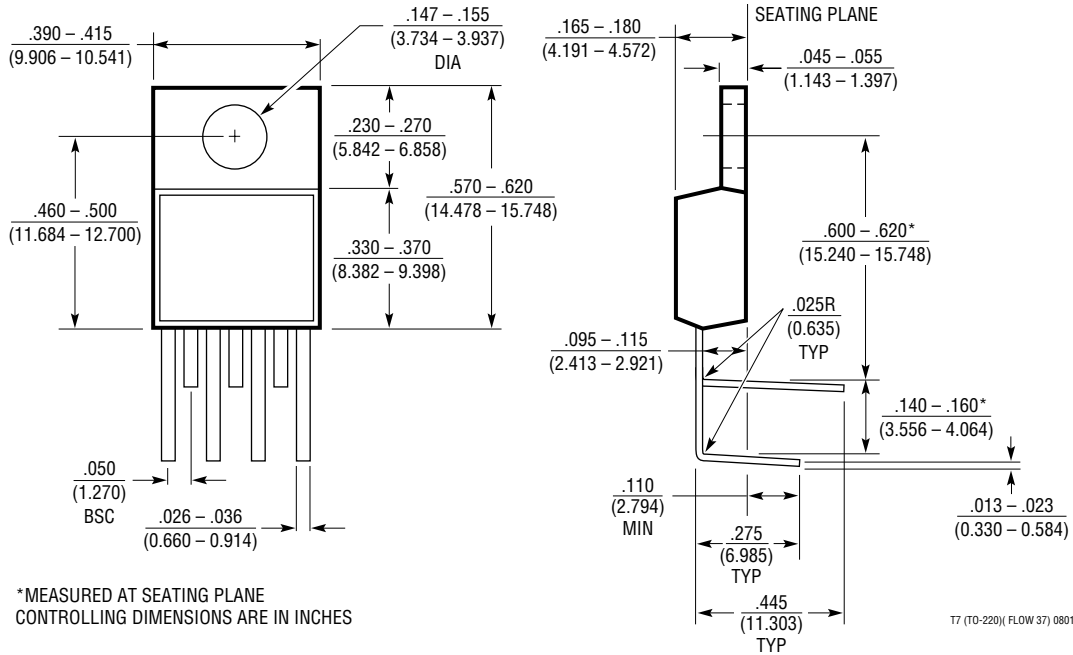


NOTE: CONTROLLING DIMENSIONS ARE IN INCHES

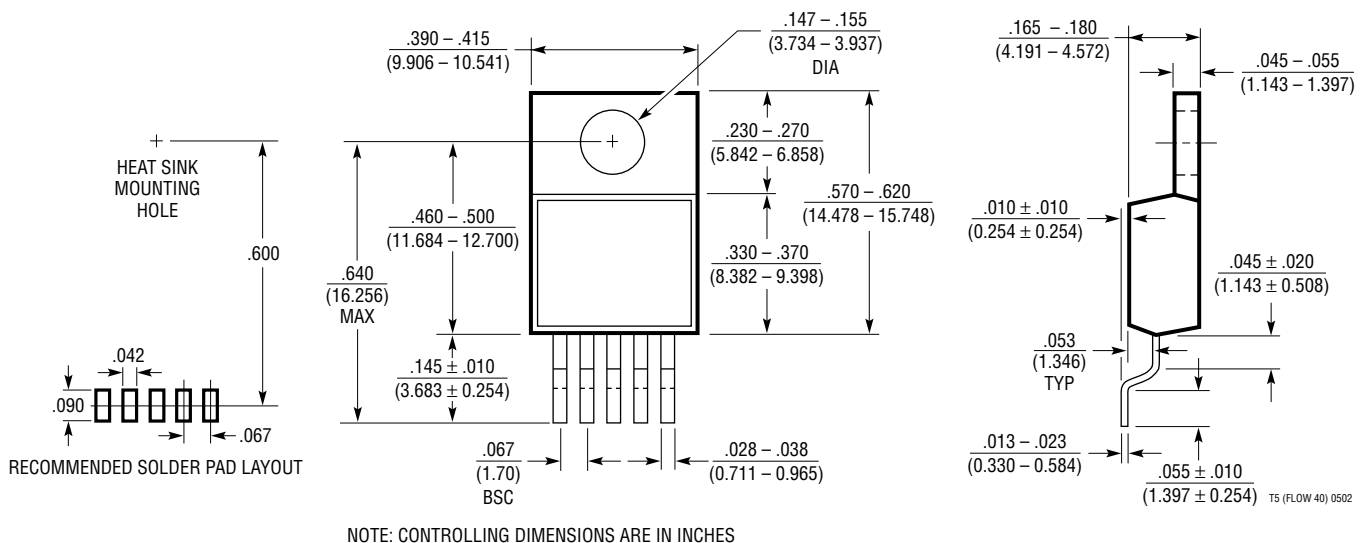
T3(TO-220)(FLOW 36) 0801

# TO-220 LEAD BEND OPTIONS

## TO-220 7-Lead Package Outline (Flow 37) (Reference LTC DWG # 05-08-1497)



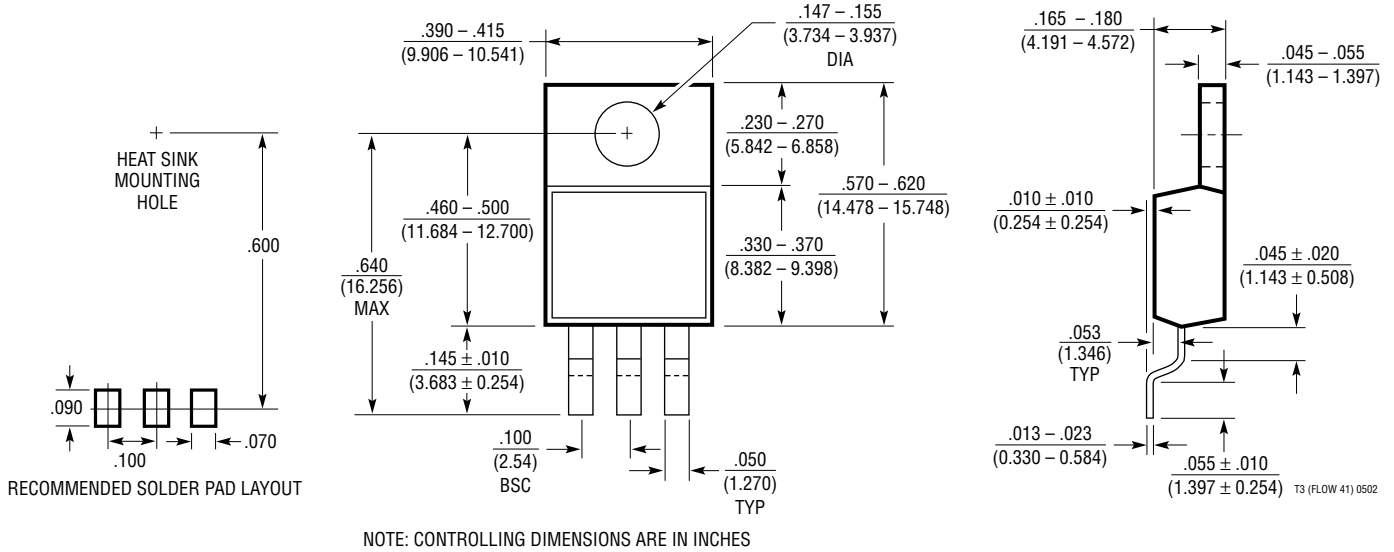
## TO-220 5-Lead Package Outline (Flow 40) (Reference LTC DWG # 05-08-1480)



# TO-220 LEAD BEND OPTIONS

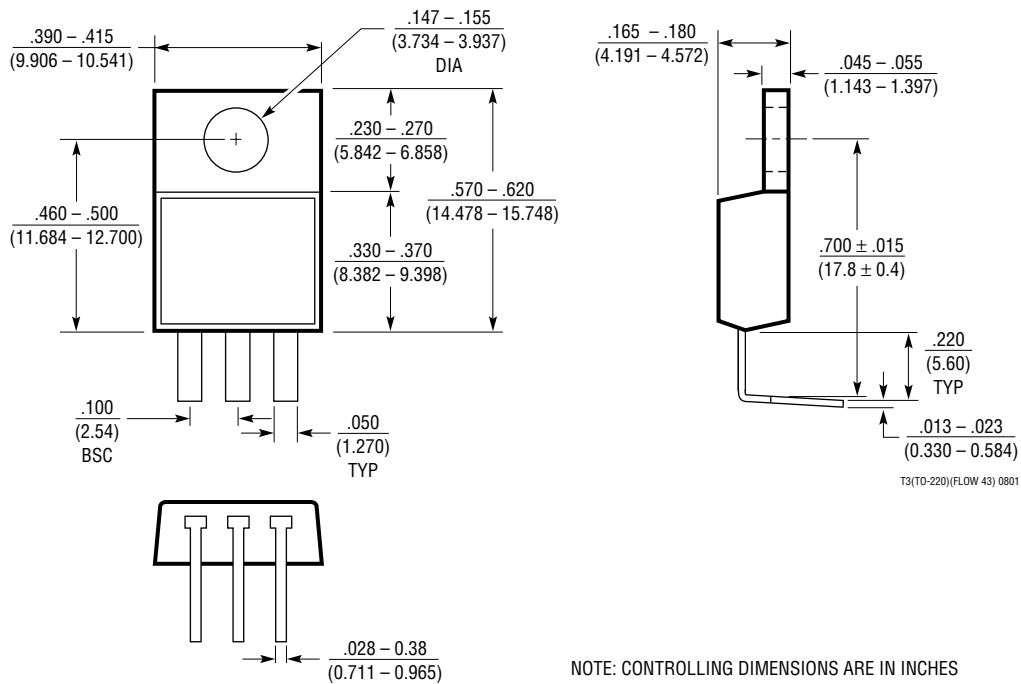
## TO-220 3-Lead Package Outline (Flow 41)

(Reference LTC DWG # 05-08-1481)



## TO-220 3-Lead Package Outline (Flow 43)

(Reference LTC DWG # 05-08-1483)



# TO-220 LEAD BEND OPTIONS

## TO-220 7-Lead Package Outline (Flow 44)

(Reference LTC DWG # 05-08-1484)

