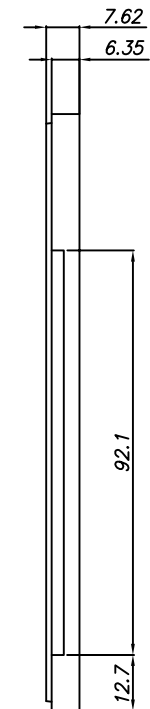
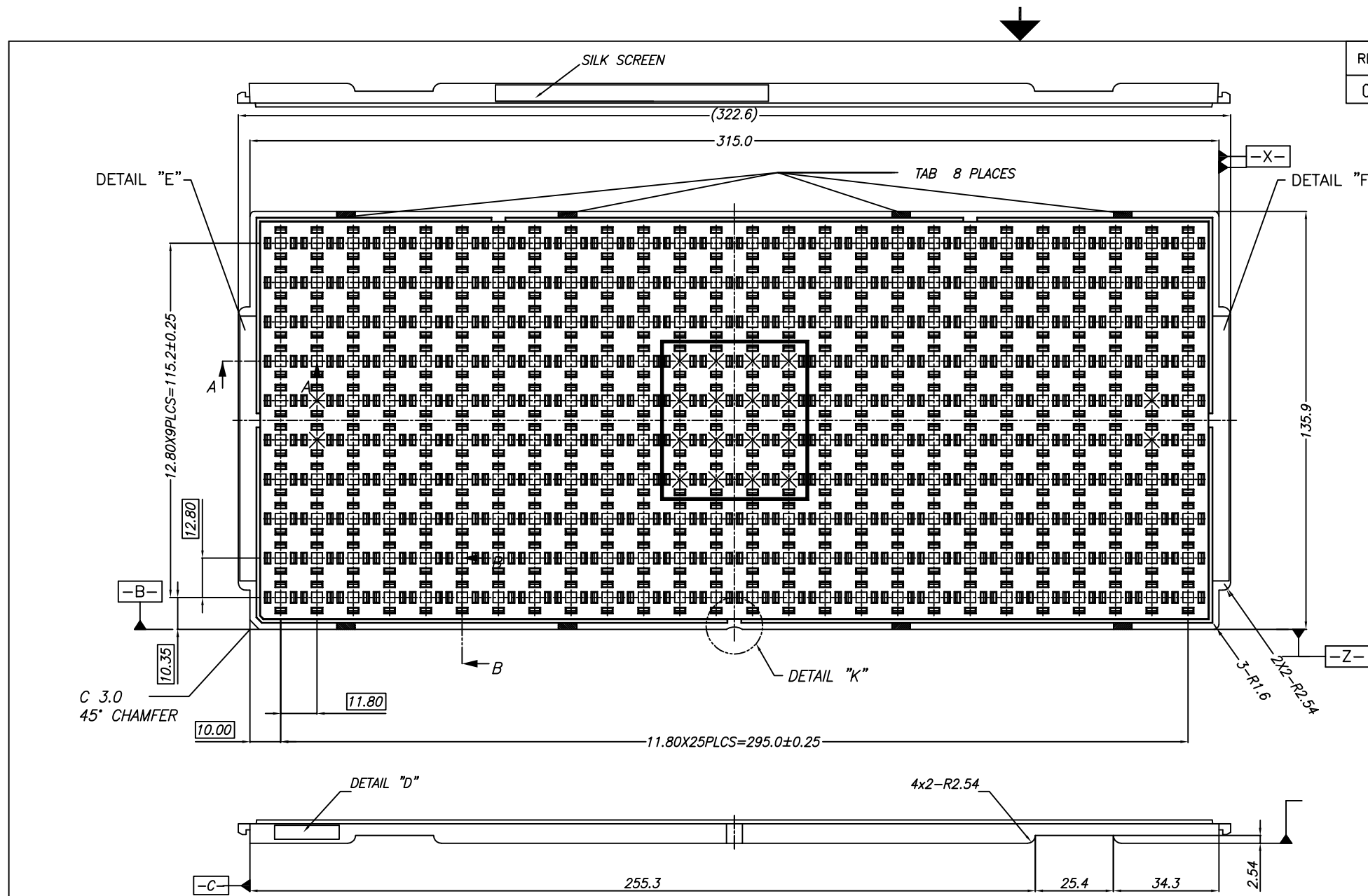


REV	DESCRIPTION	DATE	APPROVED
00	INITIAL COMPOSITE DRAWING		



BGA 6.25mm x 6.25mm
KS - 880520 REV.00

KOSTAT BGA 6.25mmX6.25mmX5.01mm 260 POCKETS

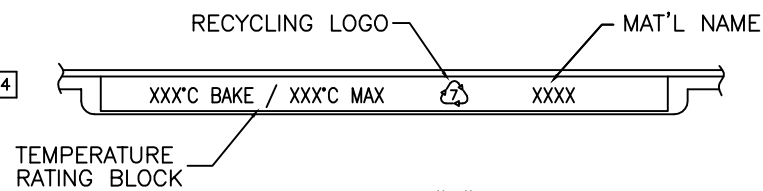
DETAIL "D"
(SCALE:2/1)

DETAIL "E"
(SCALE:2/1)

DATE DETAIL
(SCALE:2/1)

BGA 6.25mmX6.25mmX5.01mm 260 POCKETS, LTC-50-8084

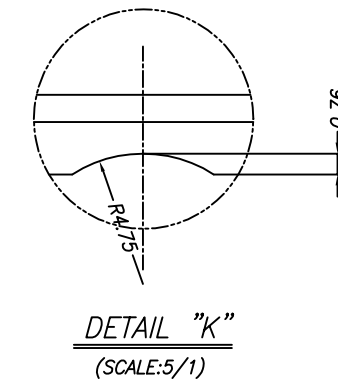
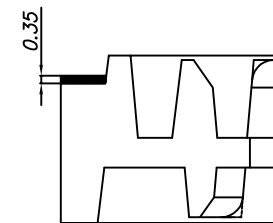
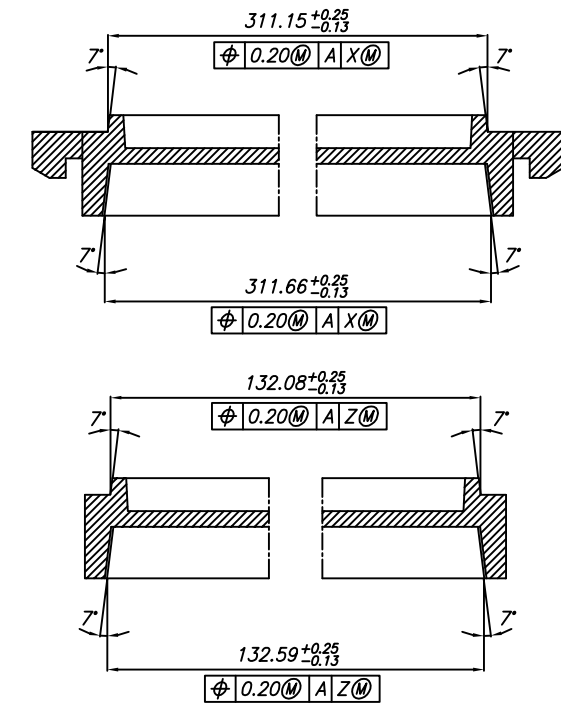
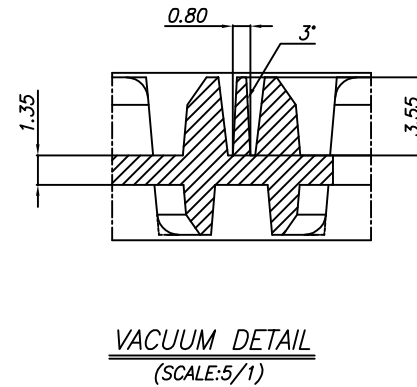
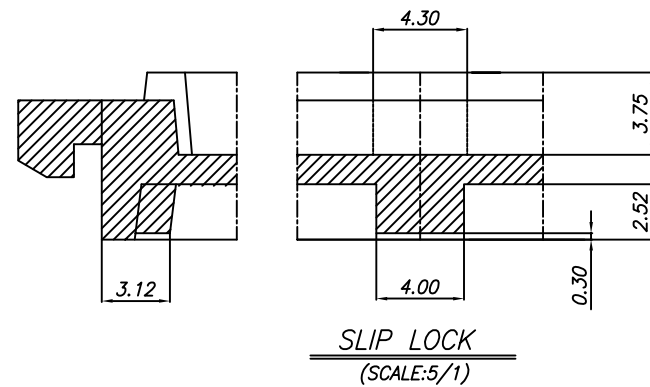
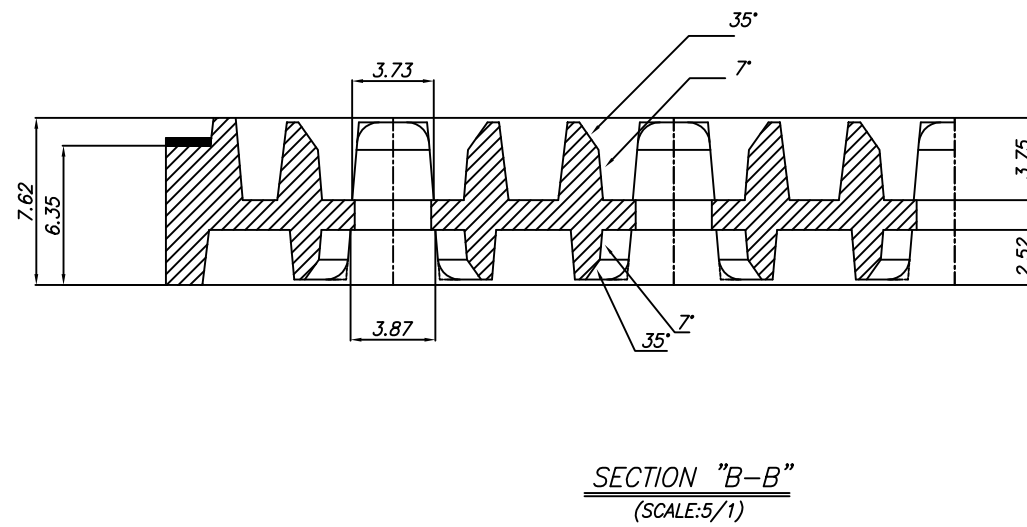
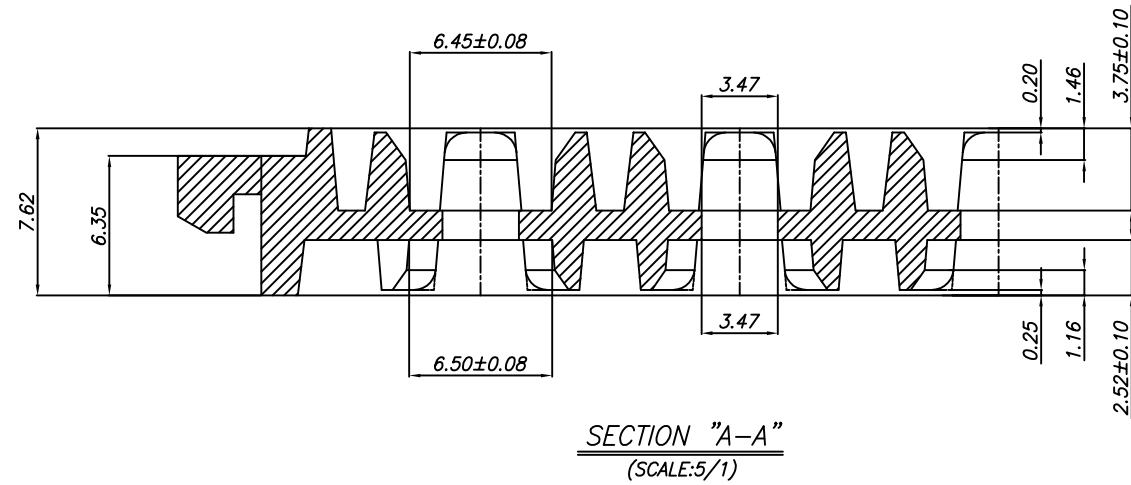
SILK SCREEN DETAIL
(SCALE:2/1)



DETAIL "F"
(SCALE:2/1)

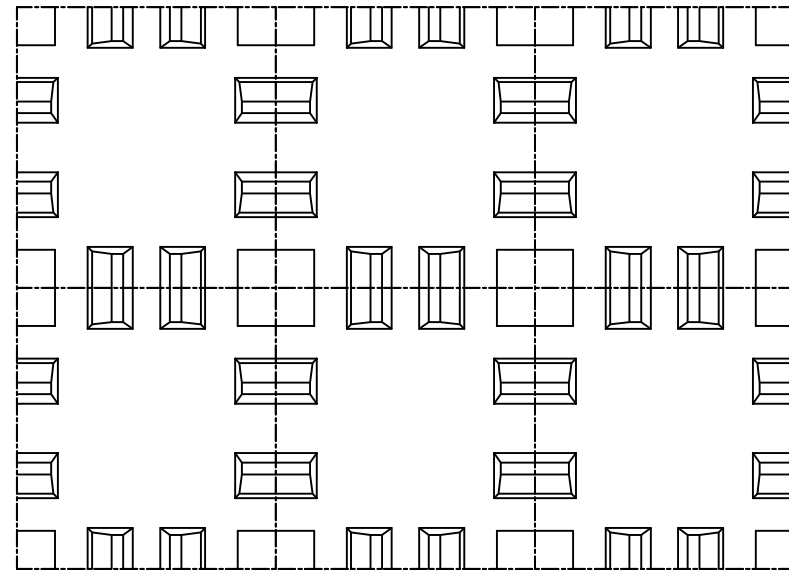
 1630 McCarthy Blvd. Milpitas, CA. 95035 Phone: 408-432-1900 LTC Confidential		PIECE PART DRAWING	
		BGA 6.25mm x 6.25mm BLACK TRAY	
DRAWING NO.		50-8084	
APPROVALS	DATE:	TOLERANCES UNLESS OTHERWISE SPECIFIED:	
DRAWN: G.SERPA		FRACTIONS N/A	DECIMALS xx.xx = ± 0.25 xx.xxx = ± 0.13
CHECKED: R.RANGANATHAN		SCALE N/A	ANGLES ± 1
		SIZE N/A	SHEET 1 OF 4

REV	DESCRIPTION	DATE	APPROVED
00	INITIAL COMPOSITE DRAWING		

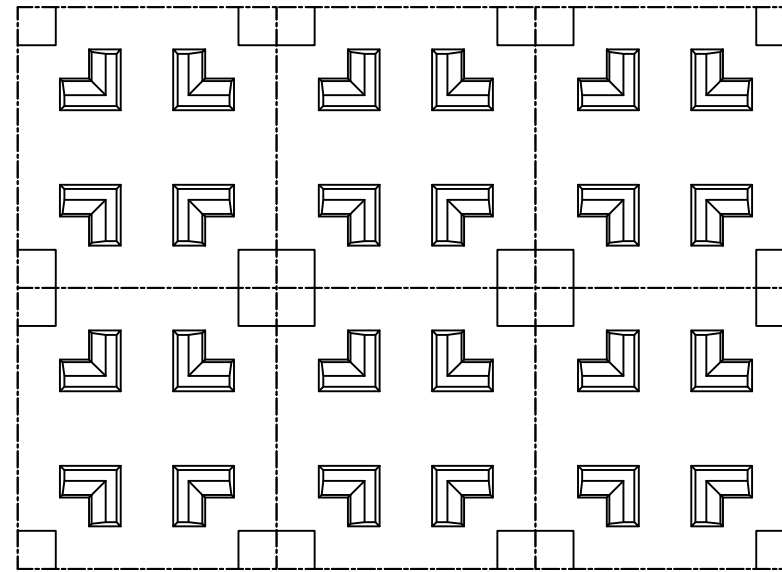


 1630 McCarthy Blvd. Milpitas, CA. 95035 Phone: 408-432-1900 LTC Confidential		PIECE PART DRAWING		
		BGA 6.25mm x 6.25mm		
DRAWING NO.		50-8084		
APPROVALS		DATE:		
DRAWN:	G.SERPA	TOLERANCES UNLESS OTHERWISE SPECIFIED:		
CHECKED:	R.RANGANATHAN	FRACTIONS	DECIMALS	ANGLES
		N/A	xx.xx = ± 0.25 xx.xxx = ± 0.13	± 1
		SCALE	SIZE	SHEET
		N/A	N/A	2 OF 4

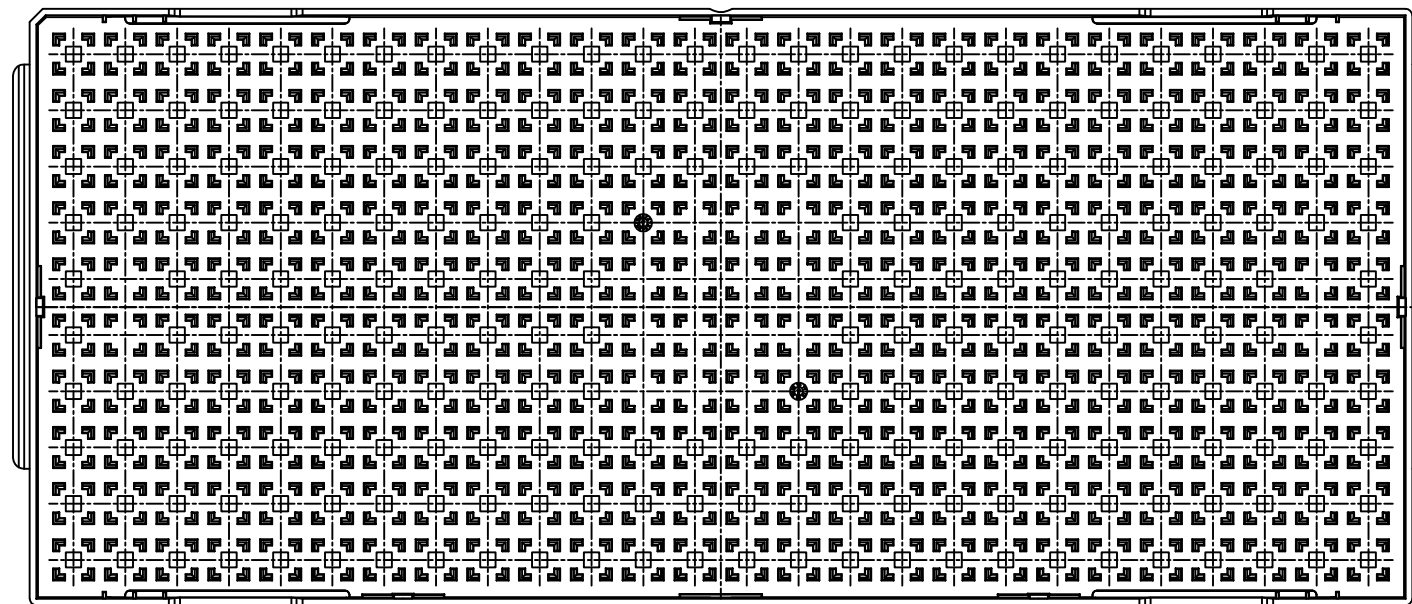
REV	DESCRIPTION	DATE	APPROVED
00	INITIAL COMPOSITE DRAWING		




TOP VIEW
(SCALE:4/1)



BOTTOM VIEW
(SCALE:4/1)

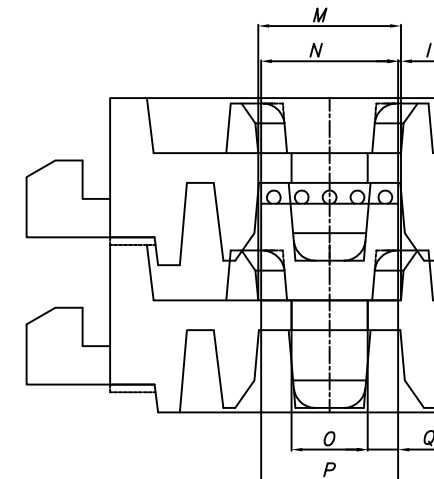
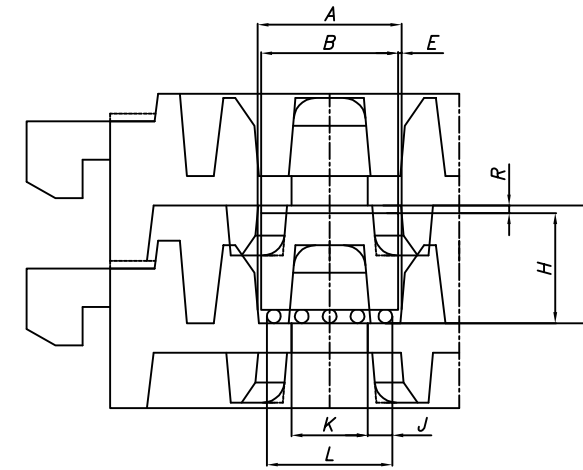



BOTTOM VIEW
(SCALE:1/1)

 1630 McCarthy Blvd. Milpitas, CA. 95035 Phone: 408-432-1900 LTC Confidential	PIECE PART DRAWING BGA 6.25mm x 6.25mm BLACK TRAY		
	DRAWING NO.		50-8084
APPROVALS	DATE:	TOLERANCES UNLESS OTHERWISE SPECIFIED:	
DRAWN: G.SERPA		FRACTIONS N/A	DECIMALS xx.xxx = ± 0.25 xx.xxx = ± 0.13
CHECKED: R.RANGANATHAN		SCALE N/A	ANGLES ± 1
		SIZE N/A	SHEET 3 OF 4

REV	DESCRIPTION	DATE	APPROVED
00	INITIAL COMPOSITE DRAWING		

SIMULATION CRITERIA						
1.	$A > B$	PACKAGE NESTING				
2.	$E > 0$	PACKAGE LATERAL PLAY				
3.	$G > H$	PACKAGE VERTICAL PLAY				
4.	$I > 0$	PACKAGE LATERAL PLAY AT FLIPPED				
5.	$K < L$	PACKAGE SEATING				
6.	$J > E$	PACKAGE SEATING PLAY				
7.	$M > N$	PACKAGE NESTING AT FLIPPED				
8.	$O < P$	PACKAGE SEATING AT FLIPPED				
9.	$Q > I$	PACKAGE SEATING PLAY AT FLIPPED				
No.	Section "AA" Condition		Nominal	Max. TRAY Min. PKG	Min. TRAY Max. PKG	Results
1	Tray	A	15.300	15.380	15.220	Pass
	Pkg.	B	15.000	14.900	15.100	
2	Gap.	$E(A-B/2)$	0.150	0.240	0.060	Pass
3	Tray	G	5.210	5.310	5.110	Pass
	Pkg.	H	4.920	4.770	5.070	
4	Gap.	$R(G-H)$	0.290	0.540	0.040	Pass
5	Gap.	$I(M-N)/2$	0.125	0.215	0.035	Pass
6	Tray	K	8.940	9.070	8.810	Pass
	Pkg.	L	13.480	13.380	13.580	
7	Gap.	$J(L-K/2)$	2.270	2.155	2.385	Pass
8	Tray	M	15.250	15.330	15.170	Pass
	Pkg.	N	15.000	14.900	15.100	
9	Tray	O	8.790	8.920	8.660	Pass
	Pkg.	P	15.000	14.900	15.100	
10	Gap.	$Q(P-O/2)$	3.105	2.990	3.220	Pass



 1630 McCarthy Blvd. Milpitas, CA. 95035 Phone: 408-432-1900 LTC Confidential	PIECE PART DRAWING BGA 6.25mm x 6.25mm BLACK TRAY		
	DRAWING NO. 50-8084		
APPROVALS	DATE:	TOLERANCES UNLESS OTHERWISE SPECIFIED:	
DRAWN: G.SERPA		FRACTIONS N/A	DECIMALS xx.xx = ± 0.25 xx.xxx = ± 0.13
CHECKED: R.RANGANATHAN		SCALE N/A	ANGLES ± 1
		SIZE N/A	SHEET 4 OF 4