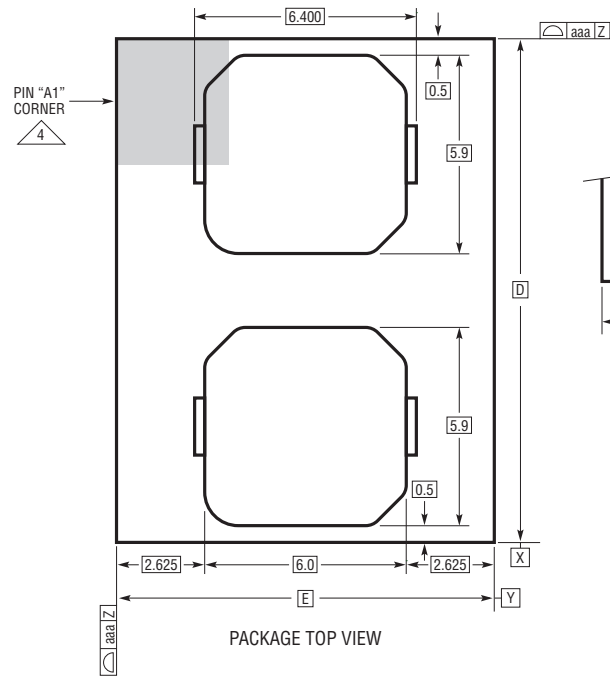
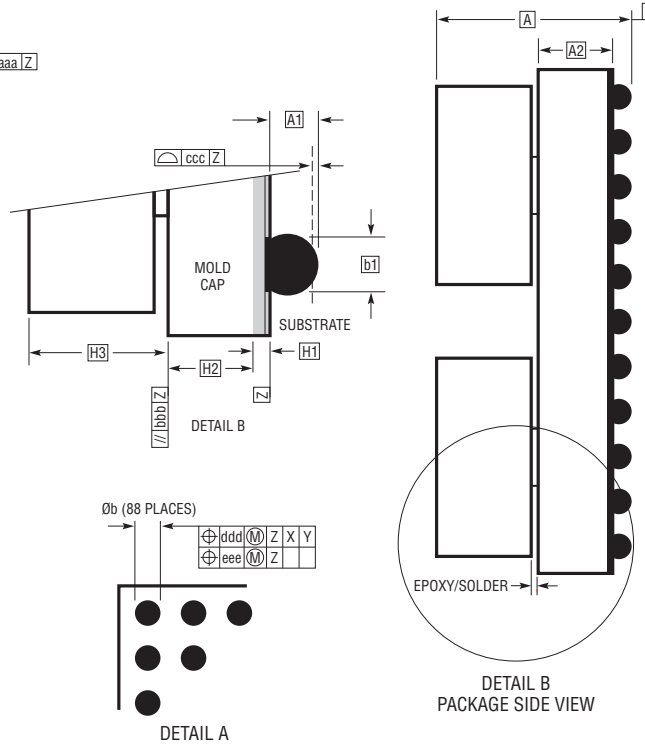


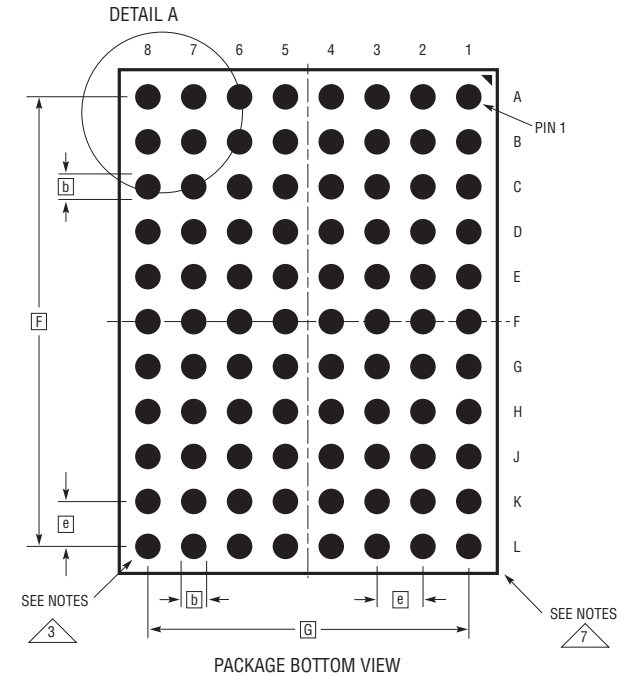
**BGA Package**  
**88-Lead (15mm × 11.25mm × 6.16mm)**  
 (Reference LTC DWG # 05-08-1526 Rev 0)



PACKAGE TOP VIEW

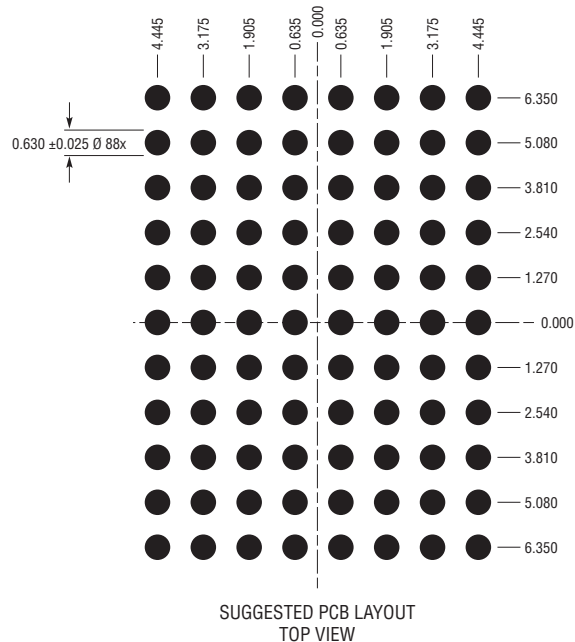


DETAIL B  
PACKAGE SIDE VIEW



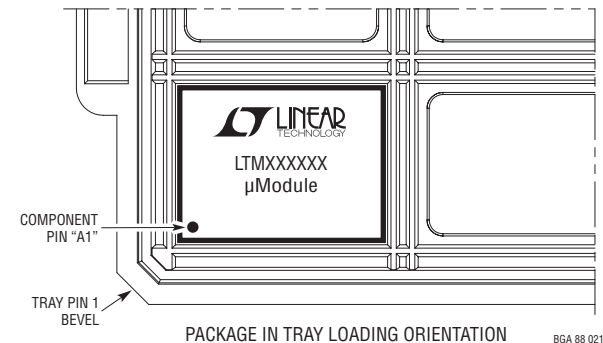
PACKAGE BOTTOM VIEW

- NOTES:
1. DIMENSIONING AND TOLERANCING PER ASME Y14.5M-1994
  2. ALL DIMENSIONS ARE IN MILLIMETERS. DRAWING NOT TO SCALE
  - 3 BALL DESIGNATION PER JESD MS-028 AND JEP95
  - 4 DETAILS OF PIN #1 IDENTIFIER ARE OPTIONAL, BUT MUST BE LOCATED WITHIN THE ZONE INDICATED. THE PIN #1 IDENTIFIER MAY BE EITHER A MOLD OR MARKED FEATURE
  5. PRIMARY DATUM -Z- IS SEATING PLANE
  6. SOLDER BALL COMPOSITION IS 96.5% Sn/3.0% Ag/0.5% Cu
  - 7 PACKAGE ROW AND COLUMN LABELING MAY VARY AMONG µModule PRODUCTS. REVIEW EACH PACKAGE LAYOUT CAREFULLY



SUGGESTED PCB LAYOUT  
TOP VIEW

| DIMENSIONS                |      |       |      |              |
|---------------------------|------|-------|------|--------------|
| SYMBOL                    | MIN  | NOM   | MAX  | NOTES        |
| A                         | 5.86 | 6.16  | 6.46 |              |
| A1                        | 0.50 | 0.60  | 0.70 | ball ht.     |
| A2                        | 2.31 | 2.41  | 2.51 |              |
| b                         | 0.60 | 0.75  | 0.90 |              |
| b1                        | 0.60 | 0.63  | 0.66 |              |
| D                         |      | 15.00 |      |              |
| E                         |      | 11.25 |      |              |
| e                         |      | 1.27  |      |              |
| F                         |      | 12.70 |      |              |
| G                         |      | 8.89  |      |              |
| H1                        | 0.36 | 0.41  | 0.46 | sub.         |
| H2                        | 1.95 | 2.00  | 2.05 | mold cap ht. |
| H3                        | 3.05 | 3.15  | 3.25 | IND ht.      |
| aaa                       |      |       | 0.15 |              |
| bbb                       |      |       | 0.10 |              |
| ccc                       |      |       | 0.20 |              |
| ddd                       |      |       | 0.30 |              |
| eee                       |      |       | 0.15 |              |
| TOTAL NUMBER OF BALLS: 88 |      |       |      |              |



PACKAGE IN TRAY LOADING ORIENTATION