

# High Power 2-Phase Synchronous Boost Replaces Hot Diodes with Cool FETs—No Heat Sinks Required

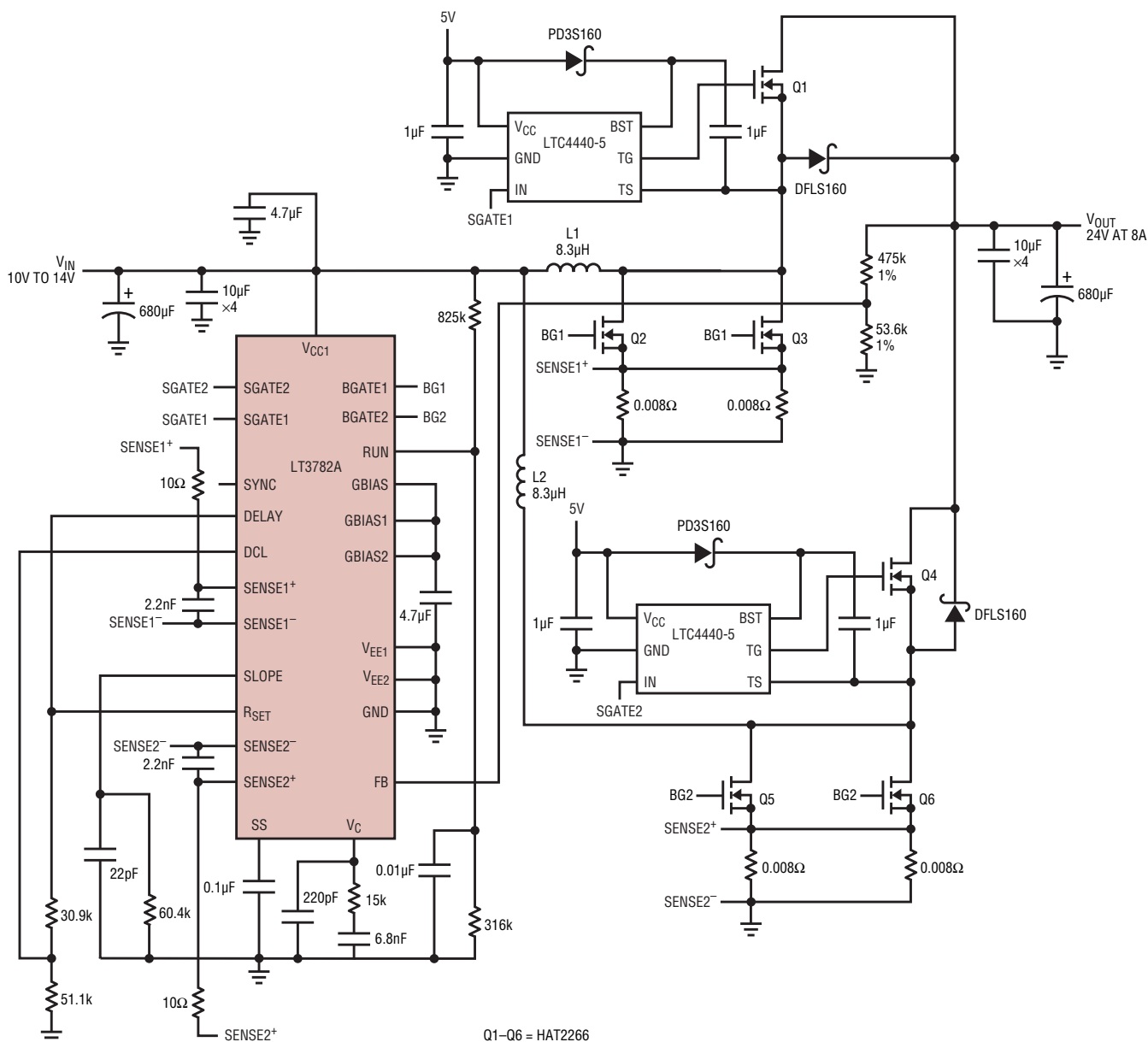
by Narayan Raja, Tuan Nguyen and Theo Phillips

## Introduction

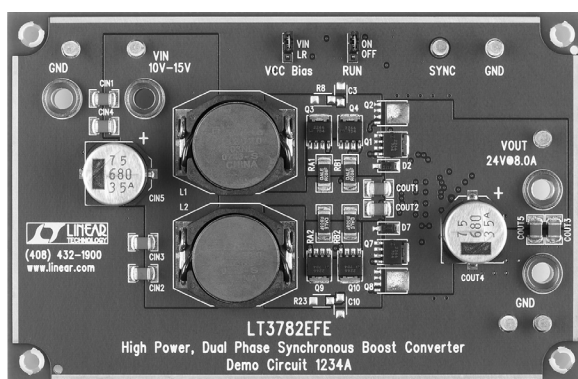
For low power designs, non-synchronous boost converters offer a simple solution. However, as power levels increase, the heat dissipated in the boost diode becomes a significant design problem. In such cases, a synchro-

nous boost converter, with the diode replaced with a lower forward voltage drop switch, significantly improves efficiency and relieves many issues with thermal layout. Although the topology is more complicated, Linear Technol-

ogy offers controller ICs that simplify the design of high power synchronous boost applications. The LT3782A boost controller, for instance, includes pre-drive outputs for external synchronous switch drivers. It also integrates strong



**Figure 1. Compact high power boost application efficiently produces a 24V/8A output from a 10V-15V input.**



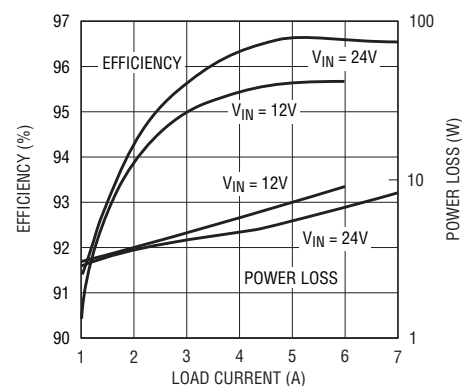
**Figure 2.** Layout of the circuit in Figure 1. Note that no heat sinks are needed, even at the high power levels produced by this relatively compact circuit.

bottom switch drivers for high gate charge high voltage MOSFETs and uses a constant frequency, peak current mode architecture to produce high output voltages from 6V to 40V inputs. Its 2-phase architecture keeps external components small and low profile.

### Synchronous Operation

At high current levels, a boost diode dissipates a significant amount of power, while a synchronous switch can burn far less. It all comes down to the forward voltage drop. The power dissipated in the boost diode is  $I_{IN} \cdot V_D$ , while the power dissipated by the synchronous switch is  $I_{IN}^2 \cdot R_{DS(ON)}$  (or  $I_{IN} \cdot V_{DS(ON)}$ ). A typical sub-10mΩ MOSFET running 10A dissipates 1W, while the 0.5V drop of a typical

Schottky diode burns a whopping 5W. Because the forward drop of a synchronous MOSFET is proportional to the current flowing through it, FETs can be paralleled to share current and drastically reduce power dissipation. On the other hand, paralleling boost diodes does little to reduce power dissipation as the forward drop through the diodes holds fairly constant. The non-synchronous boost diode topology is more than just inefficient relative to a synchronous solution—the extra heat generated in a boost diode must go somewhere, necessitating a larger package footprint and heat sinking. At high power levels, a non-synchronous boost application becomes larger in size and higher in cost over a synchronous solution.

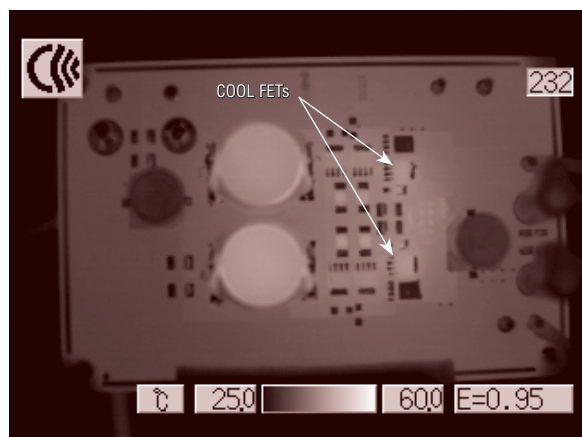


**Figure 3.** Efficiency and power loss of the circuit in Figure 1 compared to the efficiency of the circuit when the synchronous FETs are replaced with non-synchronous boost diodes.

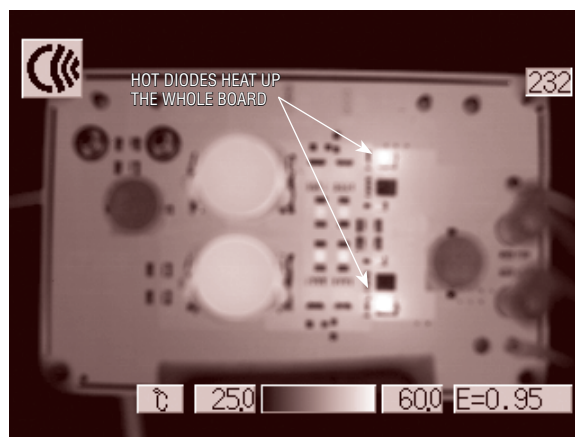
### Multiphase Operation Reduces Application Size

There are a number of good reasons to choose a multiphase/multi-channel DC/DC converter over an equivalent single-phase solution, including reduced EMI and improved thermal performance, but the biggest advantage can be a significant reduction in application size. Although a 2-phase solution requires more components, two inductors and two MOSFETs instead of one, it offers a net reduction in space and cost. This is because the inductors and MOSFETs are more than proportionally smaller than those required in the single-phase solution. Moreover, because the switching signals are mutually anti-phase, their output ripples tend to cancel each

*continued on page 39*



**a.** Thermal image of the board in Figure 2 built up with synchronous FETs



**b.** Thermal image of the board in Figure 2 built up with boost diodes

**Figure 4.** The board in Figure 2 runs fairly cool (a), but when the synchronous FETs are replaced with boost diodes, the entire board heats up considerably with the diodes running significantly hotter than the FETs (b). ( $V_{IN} = 12V$ ,  $I_{LOAD} = 6A$ , two minutes after power up.)

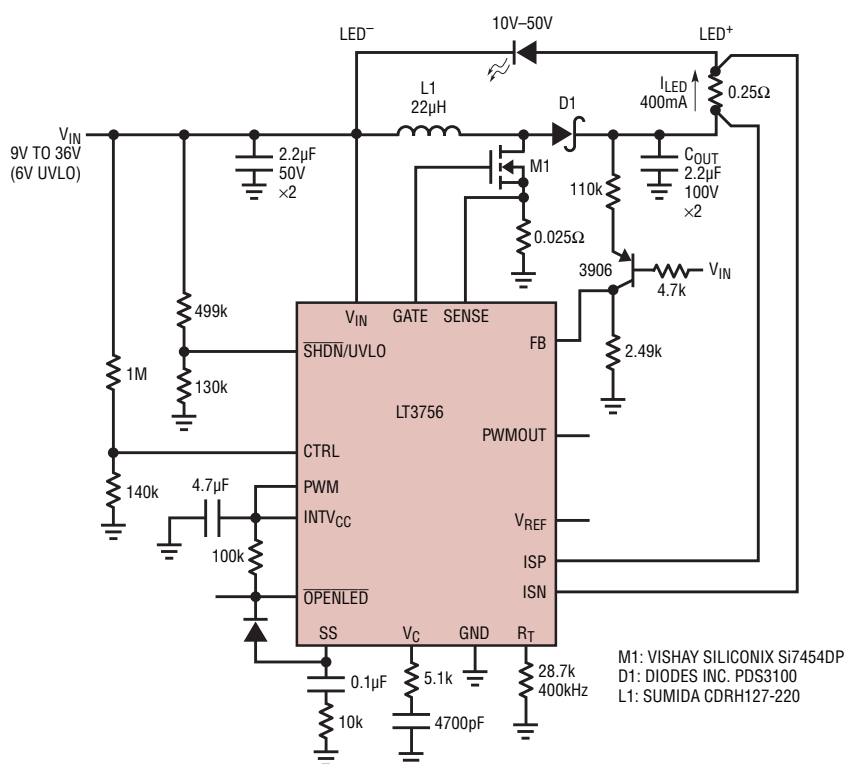


Figure 4. A buck-boost mode LED driver with wide-ranging  $V_{IN}$  and  $V_{LED}$

current; the peak inductor current is also equal to the peak switching current—higher than either a buck mode or boost topology LED driver with similar specs due to the nature of the hookup. The 4A peak switch current and inductor rating reflects the worst-case 9V input to 50V LED string at 400mA.

Below 9V input, the CTRL analog dimming input pin is used to scale back

the LED current to keep the inductor current under control if the battery voltage drops too low. The LEDs turn off below 6V input due to undervoltage lockout and will not turn back on until the input rises above 7V, to prevent flickering. In buck-boost mode, the output voltage is the sum of the input voltage and the LED string voltage. The output capacitor, the catch diode, and

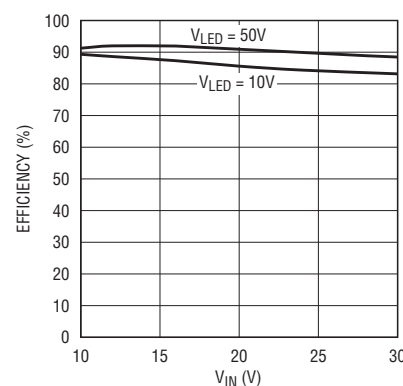



Figure 5. Efficiency for the buck-boost mode converter in Figure 4

the power MOSFET can see voltages as high as 90V for this design.

## Conclusion

The 100V LT3756 controller is ostensibly a high power LED driver, but its architecture is so versatile, it can be used in any number of high voltage input applications. Of course, it has all the features required for large (and small) strings of high power LEDs. It can be used in boost, buck-boost mode, buck mode, SEPIC and flyback topologies. Its high voltage rating, optimized LED driver architecture, high performance PWM dimming, host of protection features and accurate high side current sensing make the LT3756 a single-IC choice for a variety of high voltage input and high power lighting systems. 

LT3782A, continued from page 36

other out, thus reducing the total output ripple by 50%, which in turn reduces output capacitance requirements. The input current ripple is also halved, which reduces the required input capacitance and reduces EMI. Finally, the power dissipated as heat is spread out over two phases, reducing the size of heat sinks or eliminating them altogether.

## 24V at 8A from a 10V-15V Input

Figure 1 shows a high power boost application that efficiently produces a 24V/8A output from a 10V-15V input. The LTC4440 high side driver is used

to level shift the SGATE signals and drive the synchronous MOSFETs. The 250kHz switching frequency optimizes efficiency and component size/board area. Figure 2 shows the layout. Proper routing and filtering of the sense pins, placement of the power components and isolation using ground and supply planes ensure an almost jitter free operation, even at 50% duty cycle.

Figure 3 shows the efficiency of the circuit in Figure 1 with synchronous MOSFETs (measured to 8A) and the efficiency of an equivalent non-synchronous circuit using boost diodes (measured to 6A). The 1% improvement in peak efficiency may not seem significant, but take a look at the difference

in heat dissipation shown in Figure 4, which shows thermal images of both circuits under equivalent operating conditions. The thermal advantages of using synchronous switches are clear.

## Conclusion

The 2-phase synchronous boost topology possible with the LT3782A offers several advantages over a non-synchronous or a single-phase boost topology. Its combination of high efficiency, small footprint, heat sink-free thermal characteristics and low input/output capacitance requirements make it an easy fit in automotive and industrial applications. 