

2-Phase Synchronous Buck Controller Delivers Maximum Features in Minimum Footprint

by Eric Gu and Theo Phillips

Introduction

The LTC3850 is a feature-rich dual channel synchronous step-down switching regulator available in a 4mm × 4mm QFN package. It is designed to meet today's high performance power application needs. With constant frequency peak current mode control for clean operation over a broad range of duty cycles, the LTC3850 is

a response to customer requests for a cost-effective solution that balances ease of use, efficiency, precision and performance.

Familiar Features, and Some New Ones

The LTC3850's two channels run out of phase, which reduces the input RMS current ripple and thus the input capacitance requirement. Switching frequency can be adjusted from 250kHz to 780kHz, either set with a voltage on the FREQ/PLLFLTR pin, or synchronized to a signal into the MODE/PLLIN pin using a phase-locked loop. During high frequency operation, the LTC3850 can operate normally at low duty cycles due to its short top switch minimum on-time. For example, a 20V to 1.5V converter operating at 700kHz requires a minimum on-time of less than

$$\frac{1.5\text{V}}{(20\text{V}) \cdot (700\text{kHz})} = 107\text{ns}$$

The LTC3850 can cycle its strong top gate drivers in just 90ns, making this low duty cycle application a reality.

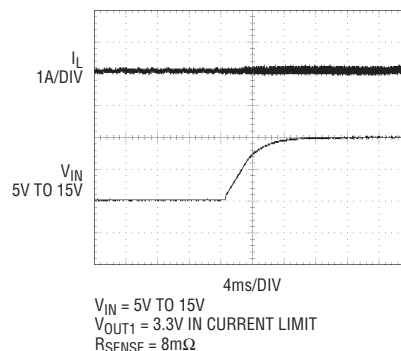


Figure 2. The LTC3850 is a peak current mode controller. As such, it uses a compensating ramp on the inductor upslope to ensure stability at duty cycles greater than 50%. Alone, the ramp would cause current limit to drop at high duty cycles, but the LTC3850 uses a patent-pending scheme to prevent this behavior. Here, the LTC3850 is operating in current limit, and peak current is well-controlled when duty cycle swings from 66% to 22%.

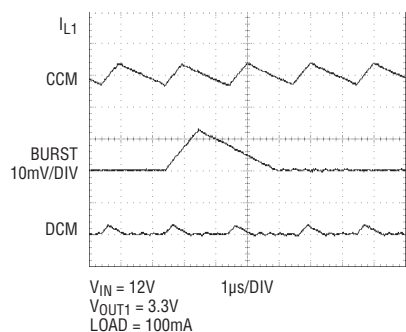


Figure 1. Three modes of operation. Continuous mode features predictable, constant frequency operation. Burst Mode® operation has the best light-load efficiency, with somewhat higher output ripple. Pulse skip mode is a compromise between the other two.

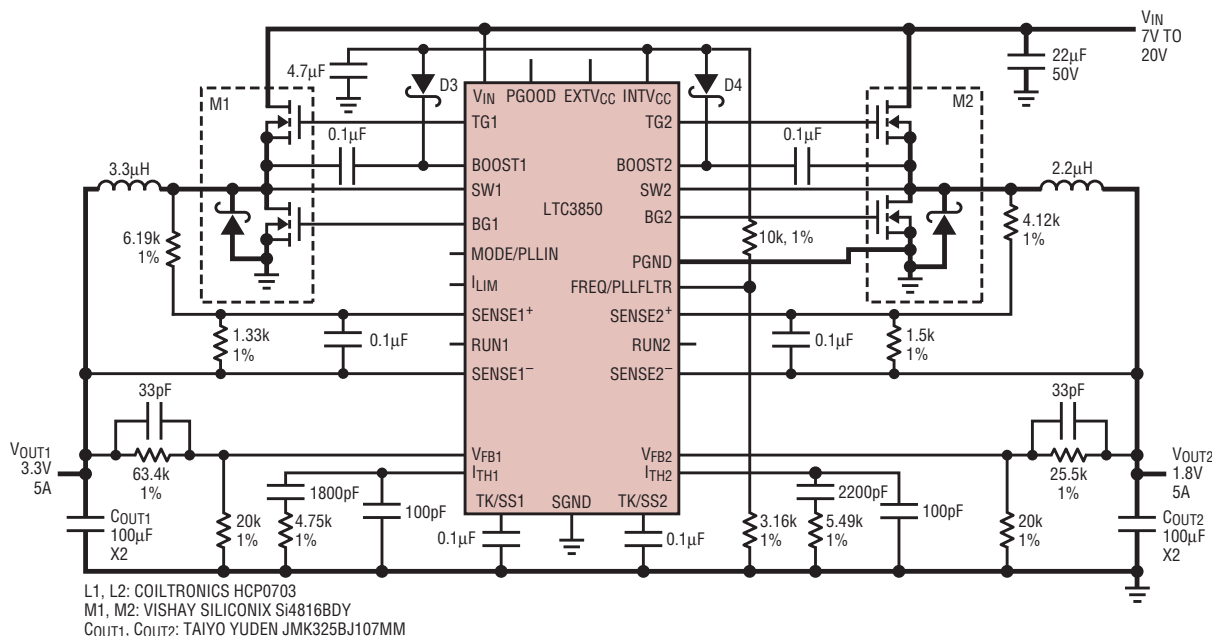


Figure 3. Schematic for a 2-channel, 5A/500kHz regulator with DCR sensing.

At heavy loads, the LTC3850 operates in constant frequency PWM mode. At light loads, it can switch in any of three modes (Figure 1). Burst Mode operation switches in pulse trains of one to several cycles, with the output capacitors supplying energy during intervening sleep periods. This provides the highest possible light load efficiency. Forced continuous mode offers PWM operation from no load to full load, providing the lowest possible output voltage ripple. Pulse skipping mode operates at a constant frequency, but always turns off the synchronous switch before inductor current is allowed to reverse. This method reduces

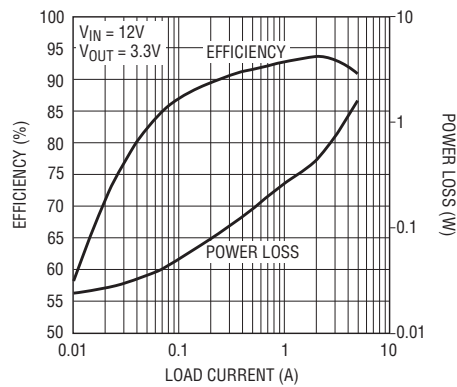


Figure 4. Efficiency and power loss for Figure 3, Channel 1.

light load ripple compared to Burst Mode operation and improves light

load efficiency compared to forced continuous mode.

Tracking provides a predictable way of slewing the output voltages up or down. Tracking generally holds the feedback voltage to the lesser of the internal reference voltage or the voltage on a TRACK pin. The LTC3850 goes farther by combining track and soft start functions in a single pin for each channel and by tailoring the mode of switching operation to the state of the TK/SS pins.

When TK/SS is ramping up from ground to 0.8V, either from its 1.3μA internal current source or by tracking another supply, the channel remains

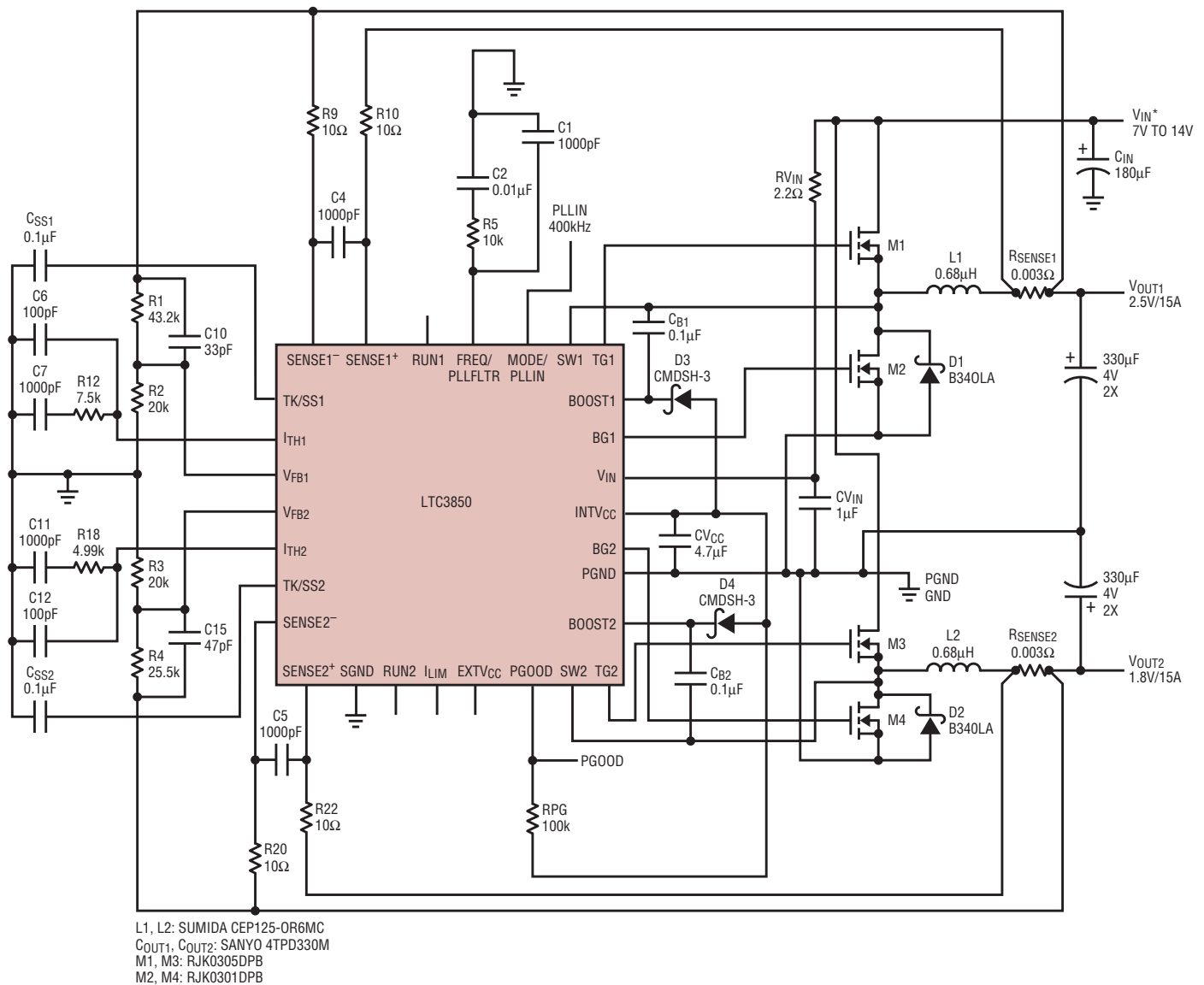


Figure 5. Schematic for a 2-channel, 15A/400kHz regulator.

in pulse skipping mode until the TK/SS voltage reaches 0.64V. This prevents the regulator from sinking current from the output while it is at 80% or less of the target voltage. When TK/SS ramps up from 0.64V to 0.74V, the channel operates in forced continuous mode to ensure that the power good indicator (PGOOD) makes just one transition from low to high when the output comes into regulation (within $\pm 7.5\%$ of the precision 0.8V reference). Once 0.74V (the undervoltage threshold) is reached, the regulator transitions to the mode of switching operation programmed on the MODE/PLLIN pin. When TK/SS is descending from 0.8V, forced continuous mode takes over when $V_{TK/SS}$ and V_{FB} ramp from 0.74V down to 0.1V, allowing the LTC3850 to pull down the output at the programmed slew rate. Once TK/SS ramps down to 0.1V, the channel begins operating in pulse skipping mode. Switching stops when TK/SS is less than the feedback voltage.

Each channel also features a separate RUN pin with a precision 1.2V turn-on threshold. When the LTC3850's own current source is used to charge the soft-start capacitor, bringing a channel's RUN pin high causes its soft-start capacitor to begin charging within about 80 μ s. As an alternative, either RUN pin can remain high while TK/SS is held low, which keeps the internal 5V regulator enabled as a standby supply. This feature can be used to power a wake-up circuit which controls the state of both TK/SS pins.

Two Ways to Sense Current

The LTC3850 features a fully differential comparator to sense current through the inductor. The SENSE⁺ and SENSE⁻ pins can be connected to a sense resistor in series with the inductor, or to an RC network in parallel with the inductor for energy efficient sensing across the inductor's DC resistance (DCR sensing). Using 1% tolerance sense resistors offers an accurate current limit, but incurs I^2R losses in the resistors. DCR sensing prevents this power loss, but uses a sense element with a typical built in

The LTC3850's two channels run out of phase, which reduces the input RMS current ripple and thus the input capacitance requirement.

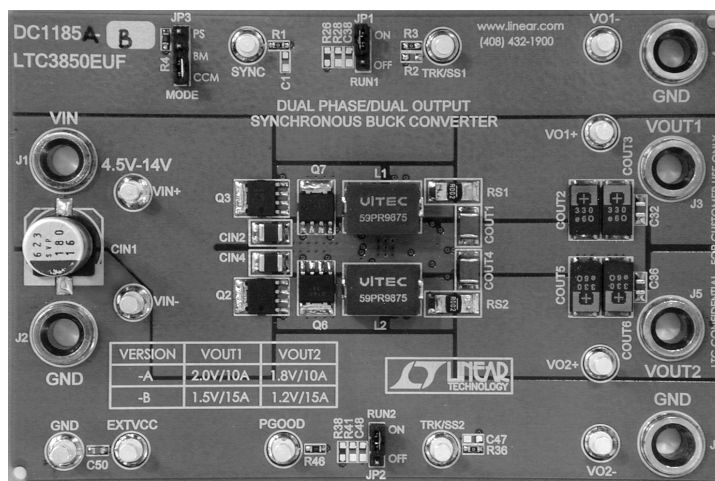
error of 5%-10%. The LTC3850 can use either method, with a choice of three pin-selectable current limits.

When an output sees a short circuit, the LTC3850 protects the input supply and power components by limiting peak current cycle by cycle. The main MOSFET turns off when the inductor's peak current sense threshold ($V_{SENSE(MAX)}/R_{SENSE}$) is reached.

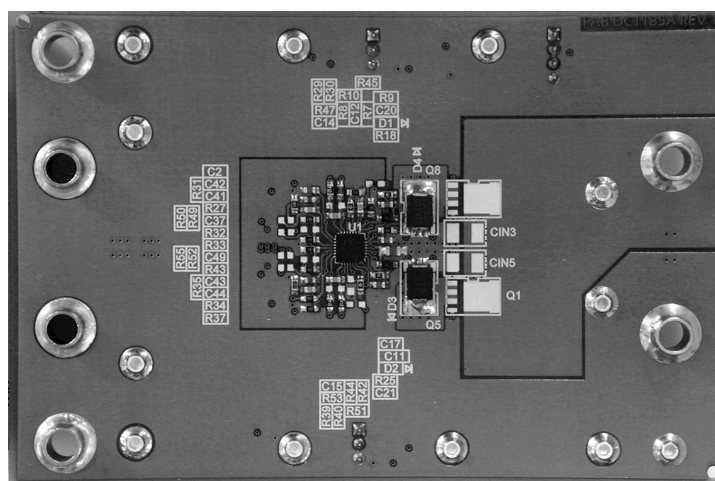
$V_{SENSE(MAX)}$ can be set to 30mV, 50mV, or 75mV, for a wide range of output current levels. Duty cycle has little effect on this current limit (Figure 2). For load currents greater than the programmed maximum but less than a hard short, the LTC3850 gracefully folds back the top MOSFET's on-time, reducing the output voltage.

The LTC3850 also protects against undervoltage input and overvoltage output voltages. The RUN pins can be referenced to a voltage divider from V_{IN} , so that their precision thresholds control the state of the outputs. If the output voltage is more than 7.5% above its target, the bottom MOSFET can remain on until regulation is recovered. If the LTC3850 is allowed

continued on page 16



a. Top view



b. Bottom view

Figure 6. The circuit of Figure 5 can be laid out inside a square inch on a two-layer board.

located far from the ADC without losing accuracy due to the resistance of the long output wire. The output can also be cascaded for additional level-shifting capability.

High Speed

The LTC6102 can support signals up to 200kHz, allowing the monitoring of fast-changing load currents. High speed also allows the LTC6102 to settle quickly after load transients, providing uninterrupted precision.

Fast Response Time

Protection circuitry must often react within microseconds to avoid system or load damage during fault conditions. The LTC6102 can respond to an input transient in 1 μ s. The output signal may then be used to turn off a MOSFET pass device or turn on a load protection circuit before system damage occurs.

Kelvin Input

The copper traces on the PC Board add to R_{IN} , creating a gain error that drifts 0.4%/°C. By connecting $-IN$ very near to R_{IN} , this effect is minimized, so very small (1 Ω or less) input resistors may be used. Small input resistors allow large gains with relatively small output impedance. Reducing the effect of parasitic series resistance also helps maintain large dynamic range, even with relatively large input resistors.

All That and Small Size, Too

Today's applications don't just require precision; they also need it in the smallest package possible. In order to meet that demand, the LTC6102 is available in a 3mm \times 3mm DD package, which requires no more board than a SOT-23. Where space is not such a premium, or where a leaded package is desired, the LTC6102 is also available in an 8-lead MSOP package.

Applications


Figure 5 depicts a simple current sensing circuit. R_{SENSE} converts the load current to a sense voltage. The LTC6102 applies a gain of 249.5 and shifts the level of the signal from the positive supply to ground. The sense resistor value may be chosen to maximize the dynamic range by setting a large maximum sense voltage (V_{SENSE}), or to limit power dissipation by choosing a smaller value. The high gain is made possible by both the Kelvin input, which allows the use of a small input resistor with little gain error, and the very low input offset, which produces less than 2.5mV error at the output. The small input resistor allows R_{OUT} to be set to 4.99k, which is small enough to be compatible with high resolution converter inputs. The addition of an LTC2433-1 is a simple way to convert the result.

For systems that are subjected to electrical interference, or for remote sensors, a capacitor may be placed

across R_{OUT} to filter the output, reducing noise and high frequency interference (Figure 6). This adds a simple pole to the output without affecting the DC result. In remote sensing, the LTC6102 should be placed in the sensor location, and the output can be run long distances to a converter. Since the output is current, not voltage, there is no loss in the wire. The output resistor and capacitor should be placed at the processor end of the wire to reduce noise and ensure accuracy.

Conclusion

Many current sensing applications can benefit from a high side sense method. High side current sensing circuits must be able to work at high voltages determined by the supply range, even under fault conditions, and must usually level-shift the signal to ground or another reference level. They must accomplish these tasks while preserving the precision and accuracy of the signal. The LTC6102 zero-drift current sensing amplifier offers the highest precision DC specifications. Wide supply range, low input offset and drift, accurate gain, fast response, and simple configurability make the LTC6102 and LTC6102HV ideal for many current sensing applications.

For a complete guide to current sense applications, visit www.linear.com/currentsense. 

LTC3850, continued from page 12

to operate with a main input voltage approaching the programmed output voltage, its duty cycle can be as high as 97%.

Dual Output, 5A Regulator with DCR Sensing

Figure 3 shows the schematic for a 500kHz, 2-output regulator requiring no sense resistors. By using the inductor's DC resistance as the current sense element, the application dissipates as little power as possible—at full load current, efficiency is well above 90%, as Figure 4 shows.

Dual Output, 15A Regulator with Sense Resistors

Figure 5 shows the schematic for an efficient 400kHz, 2-output regulator. Figure 6 shows that this circuit's core occupies less than a square inch on a 2-layer board. Peak inductor current is limited to 25A by the maximum current sense threshold looking across the sense resistor (50mV / 2m Ω). Taking inductor ripple current into account, the output current limit is around 20A for each channel. Higher load current will cause the LTC3850 to protect the power stage using current foldback.

Conclusion

The LTC3850 delivers copious features in small packages. Available in 4mm \times 4mm 28-pin QFN (0.4mm lead pitch), 4mm \times 5mm 28-pin QFN (0.5mm lead pitch), or 28-pin narrow SSOP, it can run at high efficiency using DCR sensing and Burst Mode operation. Tracking, strong on-chip drivers, multiphase operation, and external sync capability fill out its menu of features. Ideal for notebook computers, PDAs, handheld terminals and automotive electronics, the LTC3850 delivers multiphase power to mission critical applications. 