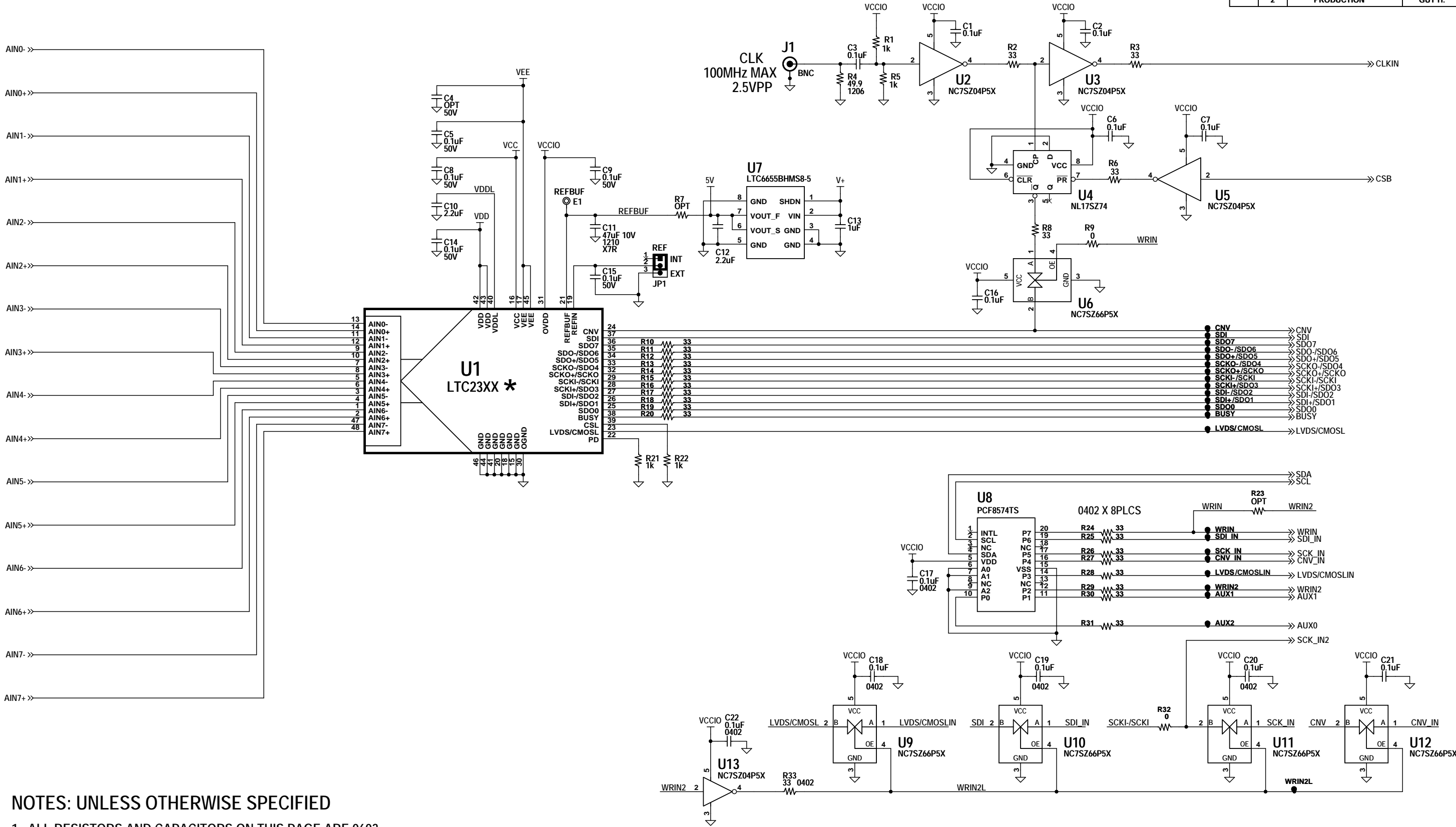


REVISION HISTORY				
ECO	REV	DESCRIPTION	APPROVED	DATE
	2	PRODUCTION	GUY H.	04-02-15

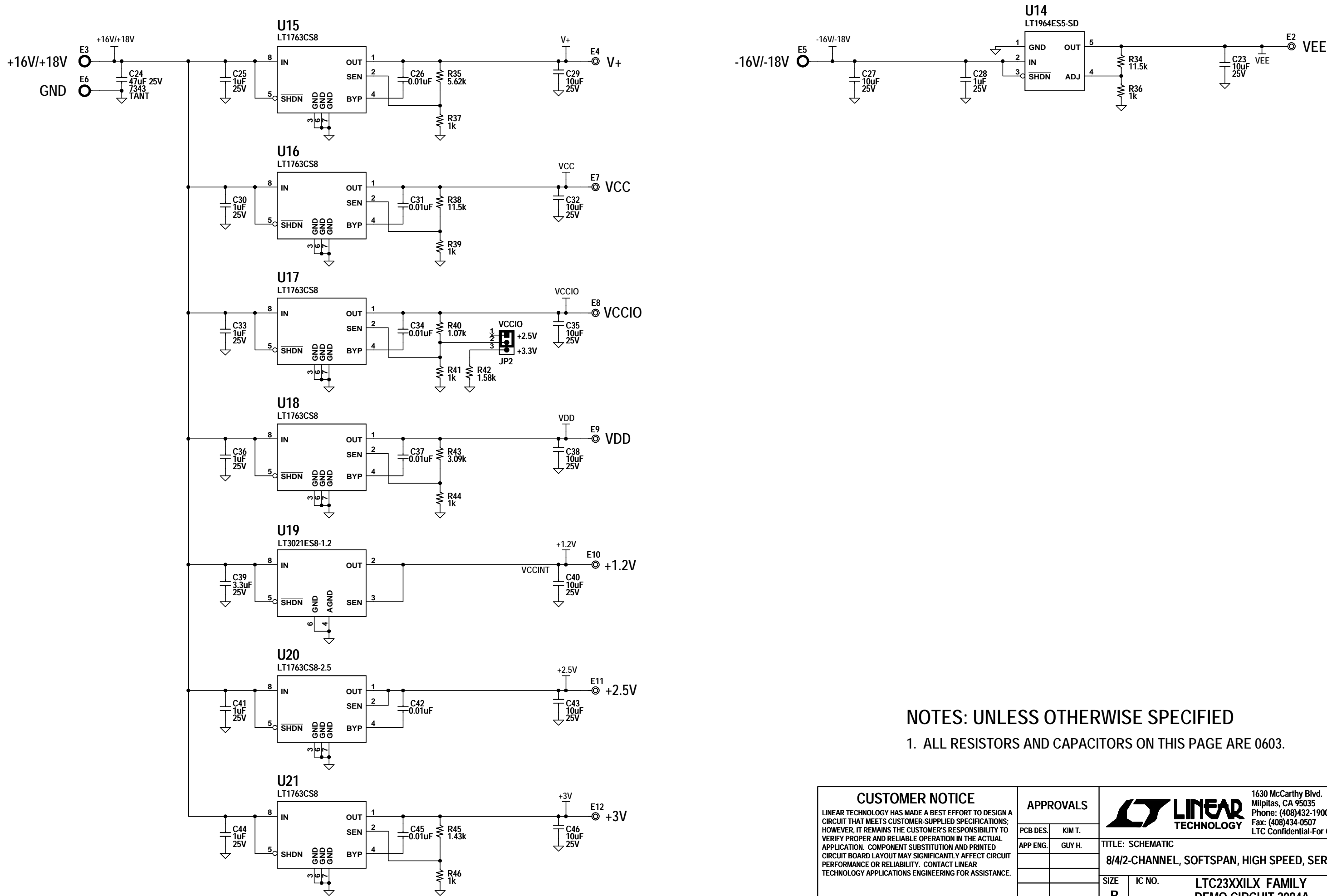


NOTES: UNLESS OTHERWISE SPECIFIED


1. ALL RESISTORS AND CAPACITORS ON THIS PAGE ARE 0603.

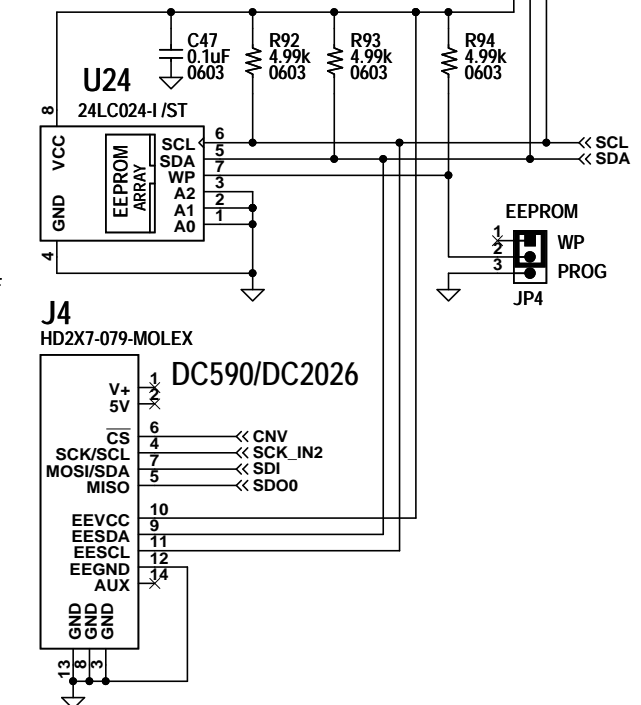
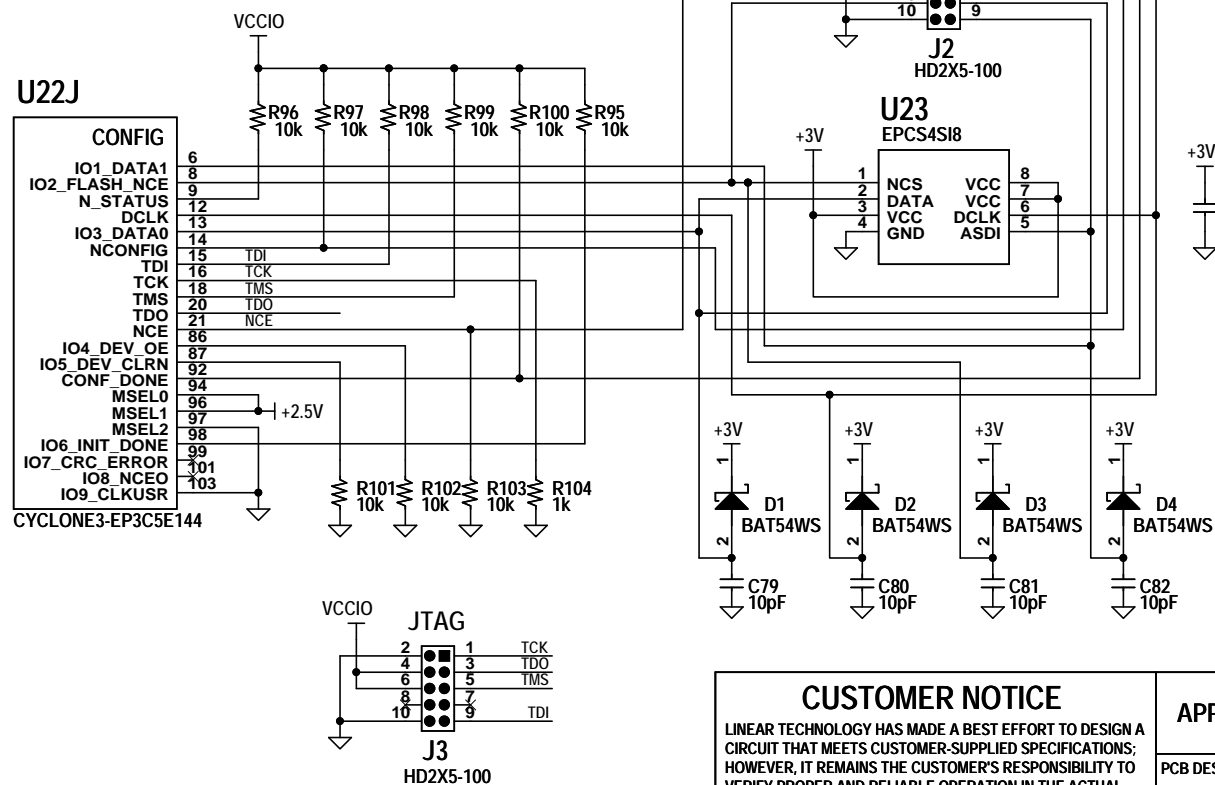
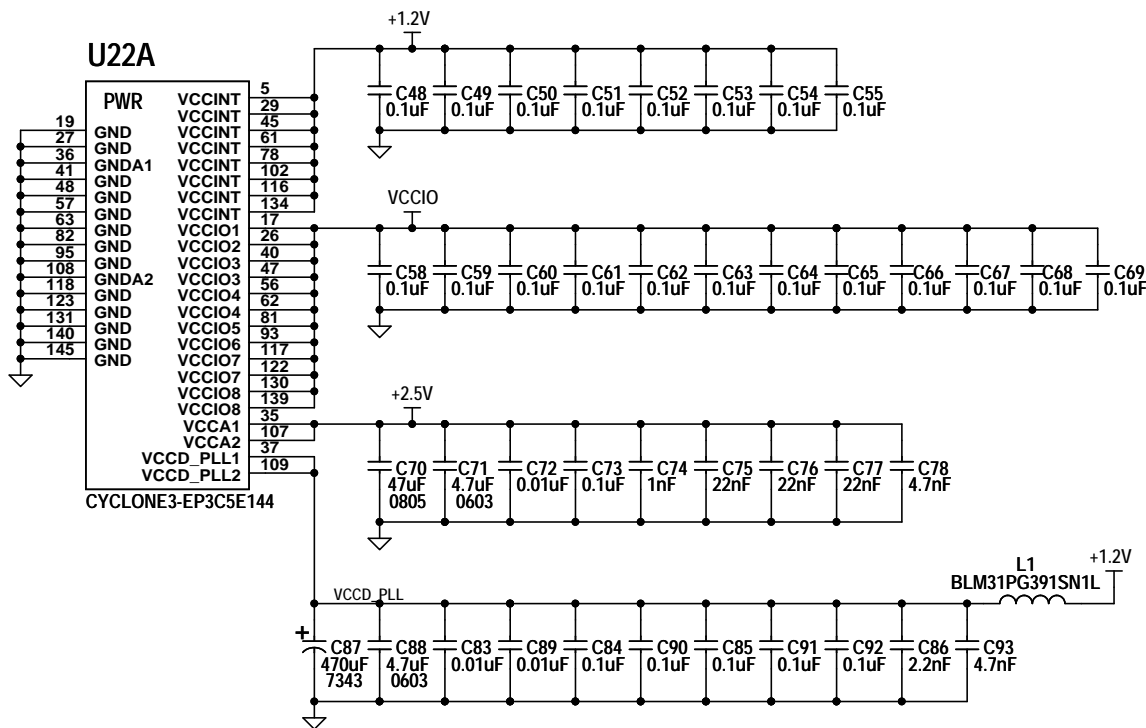
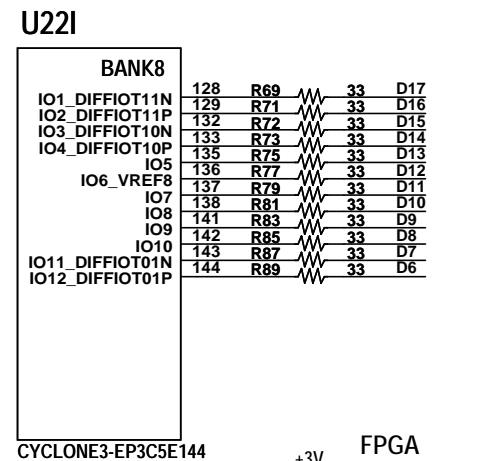
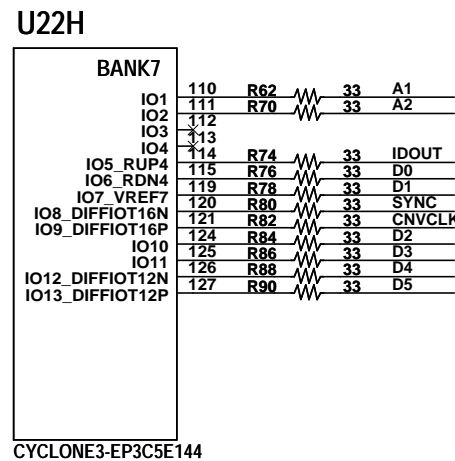
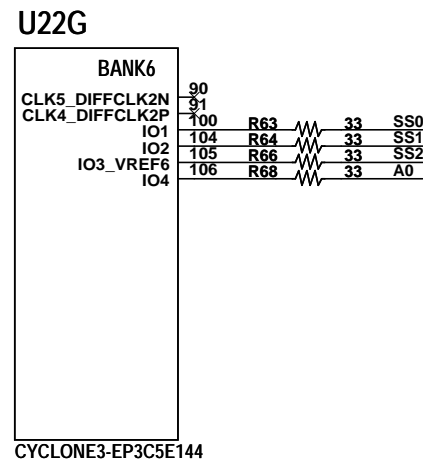
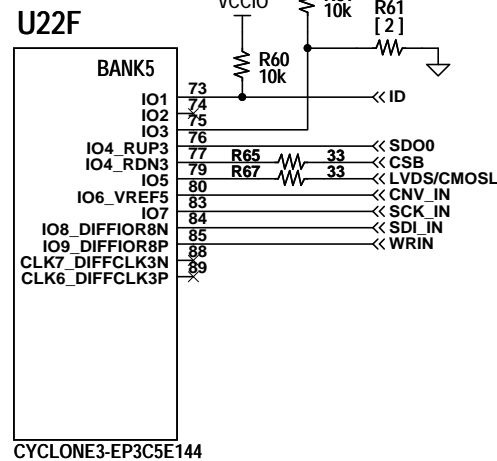
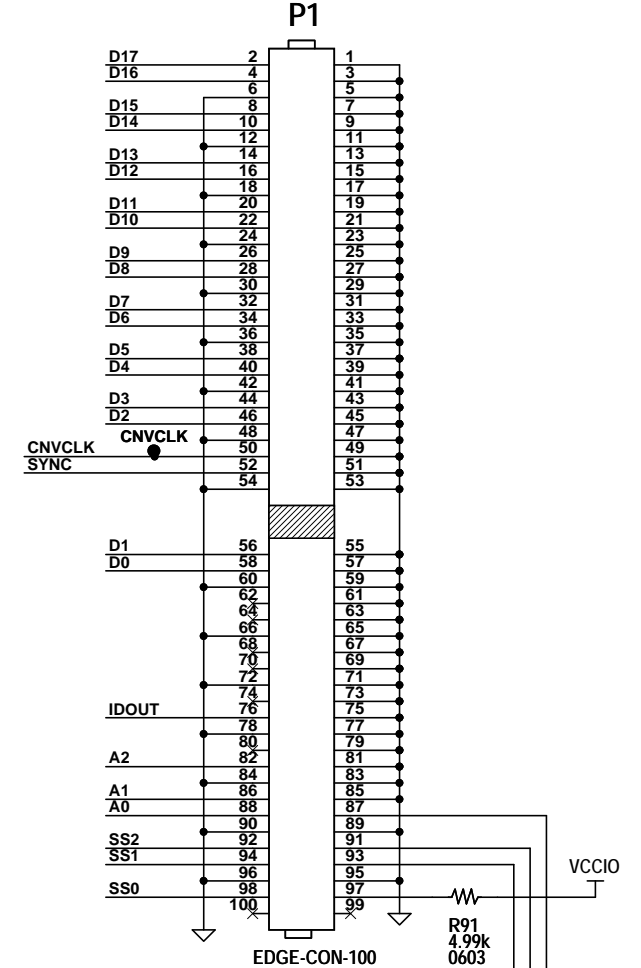
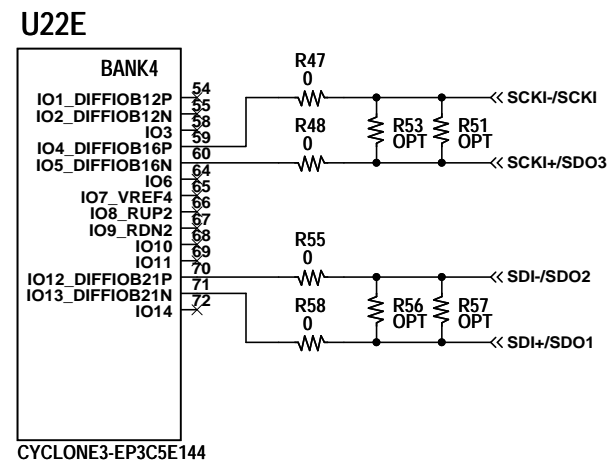
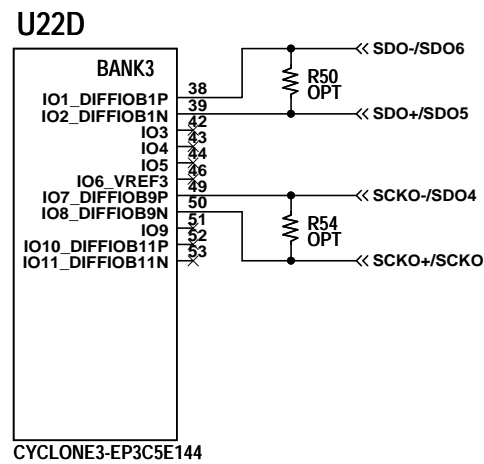
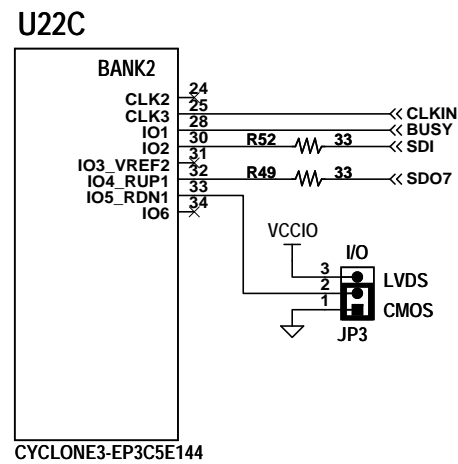
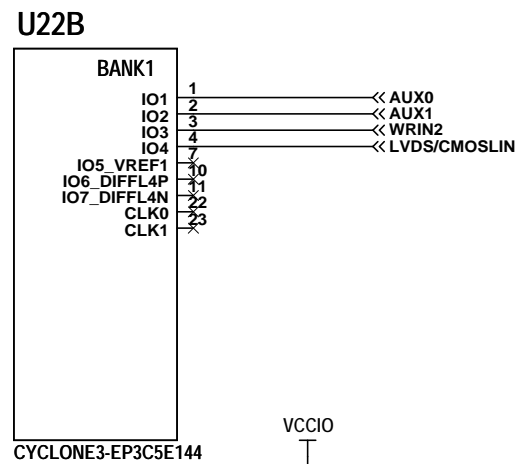
* ASSY	U1	SUFFIX	-Bit	Ksps	-CHANNEL
-A	LTC2348-18	48-18	18	200	8
-B	LTC2347-18	47-18	18	400	4
-C	LTC2343-18	43-18	18	600	2
-D	LTC2348-16	48-16	16	200	8
-E	LTC2347-16	47-16	16	400	4
-F	LTC2343-16	43-16	16	600	2

CUSTOMER NOTICE		APPROVALS		LINEAR TECHNOLOGY	
LINEAR TECHNOLOGY HAS MADE A BEST EFFORT TO DESIGN A CIRCUIT THAT MEETS CUSTOMER-SUPPLIED SPECIFICATIONS; HOWEVER, IT REMAINS THE CUSTOMER'S RESPONSIBILITY TO VERIFY PROPER AND RELIABLE OPERATION IN THE ACTUAL APPLICATION. COMPONENT SUBSTITUTION AND PRINTED CIRCUIT BOARD LAYOUT MAY SIGNIFICANTLY AFFECT CIRCUIT PERFORMANCE OR RELIABILITY. CONTACT LINEAR TECHNOLOGY APPLICATIONS ENGINEERING FOR ASSISTANCE.		PCB DES.	KIM T.	1630 McCarthy Blvd. Milpitas, CA 95035 Phone: (408)432-1900 www.linear.com Fax: (408)434-0507 LTC Confidential-For Customer Use Only	
		APP ENG.	GUY H.		
				TITLE: SCHEMATIC	
				8/4/2-CHANNEL, SOFTSPAN, HIGH SPEED, SERIAL, SAR, ADC	
THIS CIRCUIT IS PROPRIETARY TO LINEAR TECHNOLOGY AND SUPPLIED FOR USE WITH LINEAR TECHNOLOGY PARTS.		SCALE = NONE		SIZE	IC NO.
				B	LTC23XXILX FAMILY DEMO CIRCUIT 2094A
				DATE:	04/02/2015, 10:17 AM
				SHEET 1 OF 4	



NOTES: UNLESS OTHERWISE SPECIFIED
1. ALL RESISTORS AND CAPACITORS ON THIS PAGE ARE 0603.

CUSTOMER NOTICE LINEAR TECHNOLOGY HAS MADE A BEST EFFORT TO DESIGN A CIRCUIT THAT MEETS CUSTOMER-SUPPLIED SPECIFICATIONS; HOWEVER, IT REMAINS THE CUSTOMER'S RESPONSIBILITY TO VERIFY PROPER AND RELIABLE OPERATION IN THE ACTUAL APPLICATION. COMPONENT SUBSTITUTION AND PRINTED CIRCUIT BOARD LAYOUT MAY SIGNIFICANTLY AFFECT CIRCUIT PERFORMANCE OR RELIABILITY. CONTACT LINEAR TECHNOLOGY APPLICATIONS ENGINEERING FOR ASSISTANCE.		APPROVALS		 <div>1630 McCarthy Blvd. Milpitas, CA 95035 Phone: (408)432-1900 www.linear.com Fax: (408)434-0507 LTC Confidential-For Customer Use Only</div>		
		PCB DES.	KIM T.	TITLE: SCHEMATIC		
		APP ENG.	GUY H.	8/4/2-CHANNEL, SOFTSPAN, HIGH SPEED, SERIAL, SAR, ADC		
THIS CIRCUIT IS PROPRIETARY TO LINEAR TECHNOLOGY AND SUPPLIED FOR USE WITH LINEAR TECHNOLOGY PARTS.				SIZE B	IC NO. LTC23XXILX FAMILY DEMO CIRCUIT 2094A	REV. 2
		SCALE = NONE		DATE: 03/12/2015, 11:32 AM		SHEET 2 OF 4



NOTES: UNLESS OTHERWISE SPECIFIED

1. ALL RESISTORS AND CAPACITORS ON THIS PAGE ARE 0402.
2. R61 IS 0 OHMS ON ASSEMBLY TYPES A,B,C,D AND OPTIONAL ON E,F,G,H. (SEE ASSY TABLE ON PAGE 4)

CUSTOMER NOTICE

LINEAR TECHNOLOGY HAS MADE A BEST EFFORT TO DESIGN A CIRCUIT THAT MEETS CUSTOMER-SUPPLIED SPECIFICATIONS; HOWEVER, IT REMAINS THE CUSTOMER'S RESPONSIBILITY TO VERIFY PROPER AND RELIABLE OPERATION IN THE ACTUAL APPLICATION. COMPONENT SUBSTITUTION AND PRINTED CIRCUIT BOARD LAYOUT MAY SIGNIFICANTLY AFFECT CIRCUIT PERFORMANCE OR RELIABILITY. CONTACT LINEAR TECHNOLOGY APPLICATIONS ENGINEERING FOR ASSISTANCE.

**THIS CIRCUIT IS PROPRIETARY TO LINEAR TECHNOLOGY AND
SUPPLIED FOR USE WITH LINEAR TECHNOLOGY PARTS.**

APPROVALS

PCB DES.	KIM T.
APP ENG	GLY H.

SCALE = NONE



1630 McCarthy Blvd.
Milpitas, CA 95035
Phone: (408)432-1900 www.linear.com
Fax: (408)434-0507
LTC Confidential-For Customer Use Only

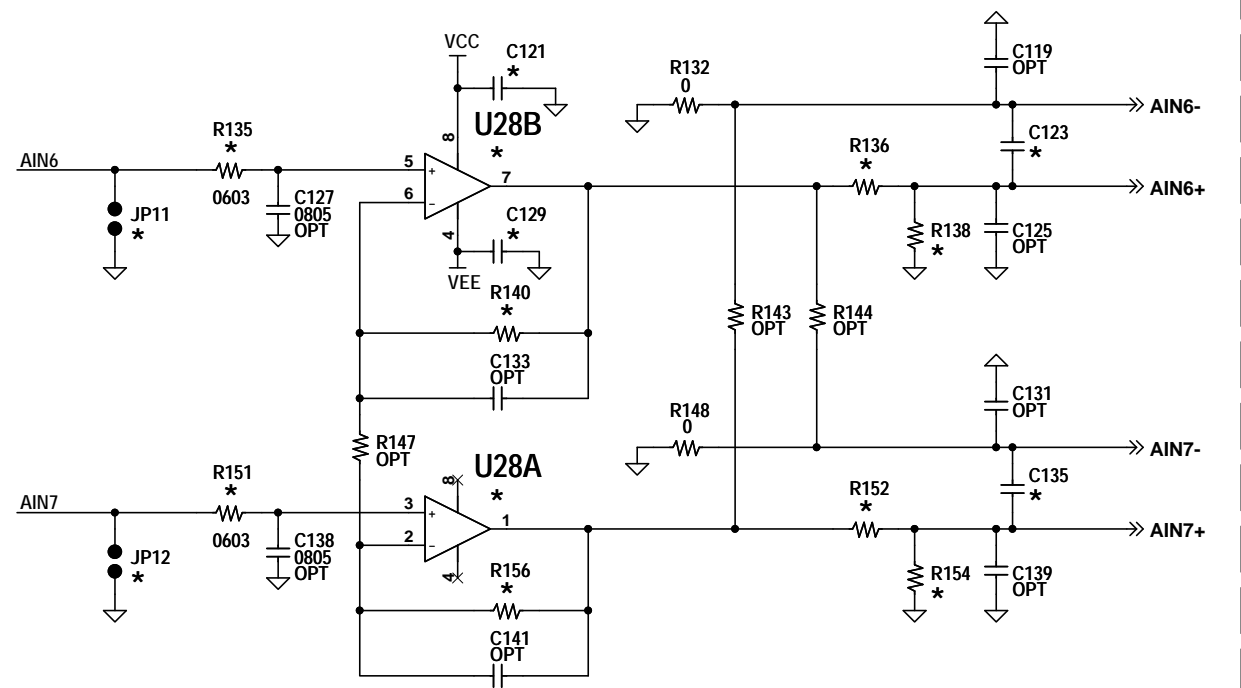
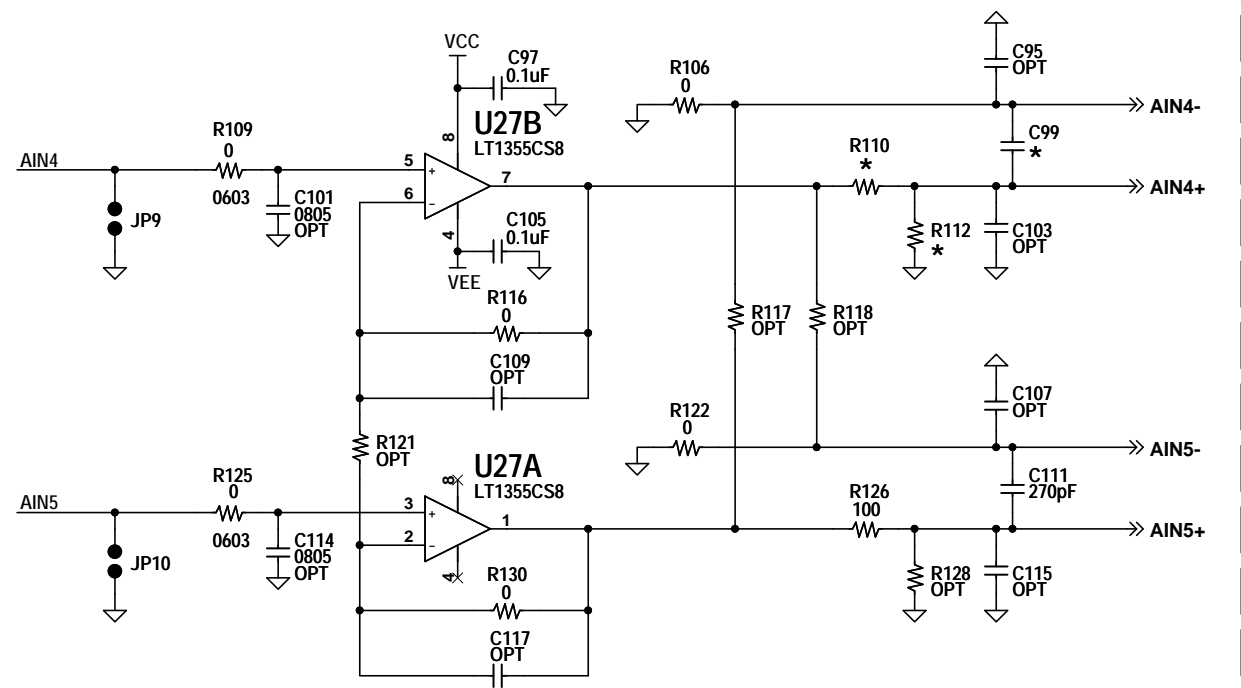
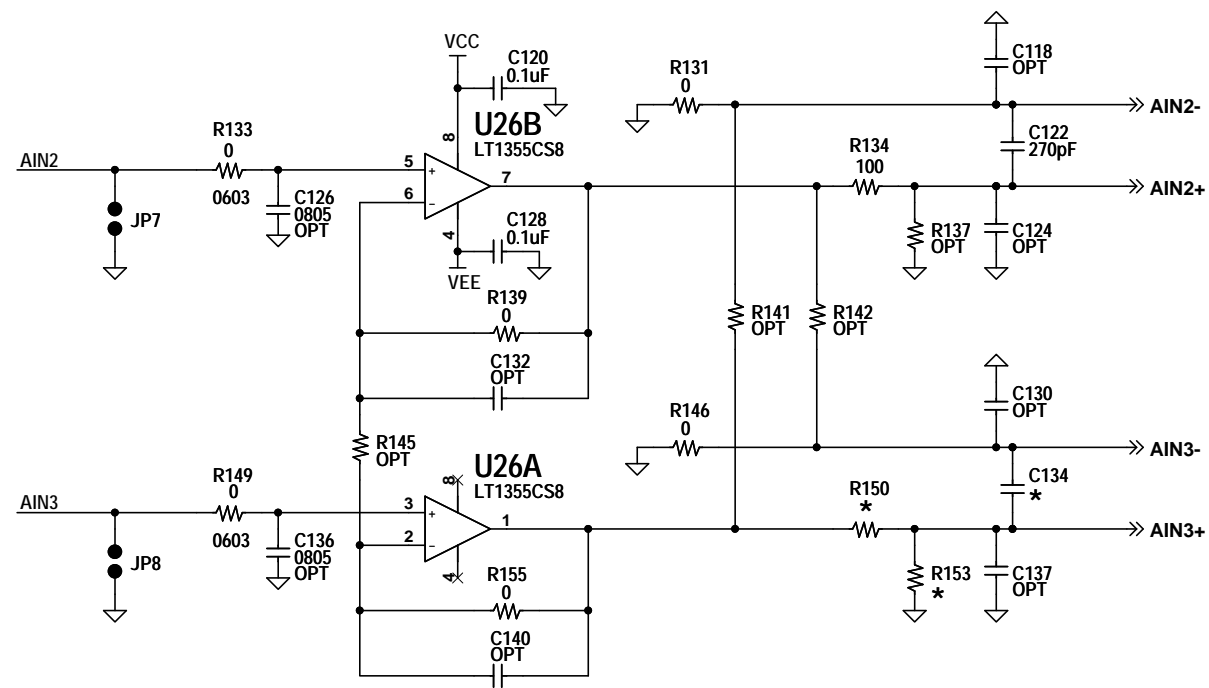
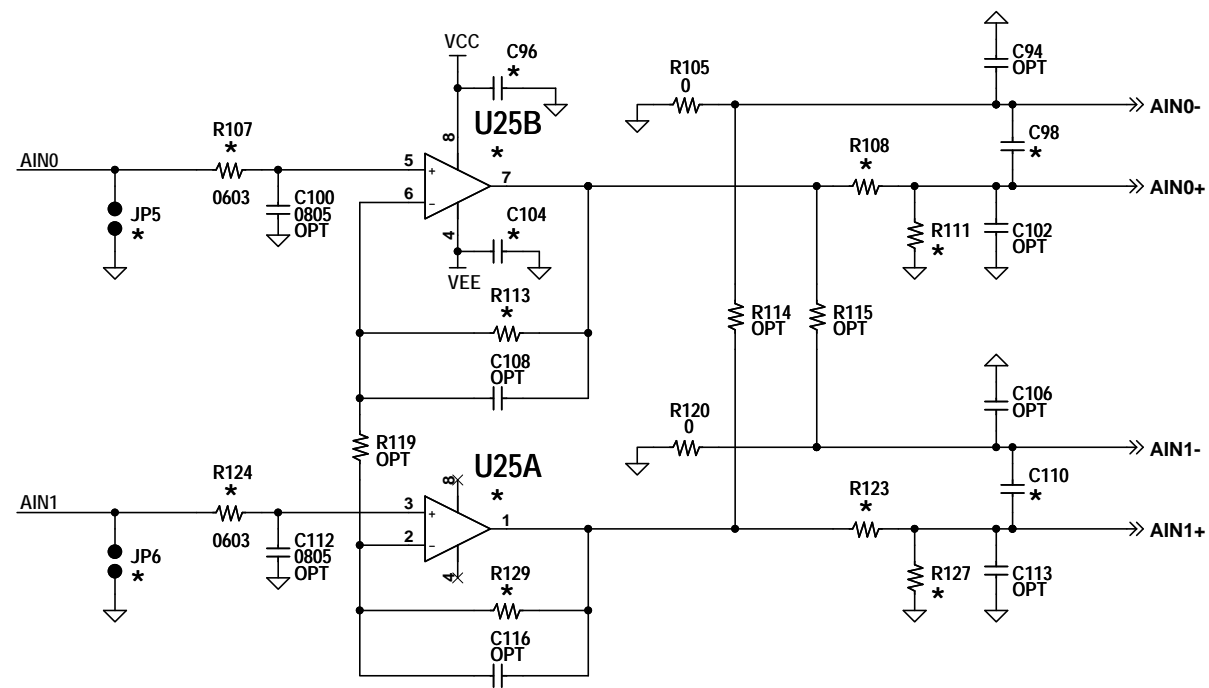
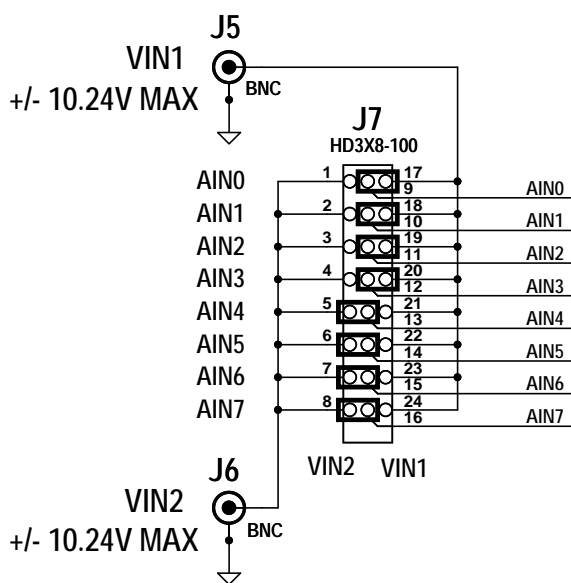
TITLE: SCHEMATIC

8/4/2-CHANNEL, SOFTSPAN, HIGH SPEED, SERIAL, SAR, ADC

SIZE B	IC NO. LTC23XXILX FAMILY DEMO CIRCUIT 2094A	REV. 2
------------------	---	------------------

DATE: 03/12/2015, 11:32 AM

SHEET 3 OF 4



*

	AIN7 (JP12)	AIN6 (JP11)	AIN5 (JP10)	AIN4 (JP9)	AIN3 (JP8)	AIN2 (JP7)	AIN1 (JP6)	AIN0 (JP5)
8-CH	X	X	X	X	X	X	X	X
4-CH	X		X			X		X
2-CH			X			X		

ASSY	U1 (PAGE 1)	-CH	C96,C104, C121,C129	C98, C135	C99,C110, C123,C134	JP5,JP6, JP11,JP12	R61 (PAGE 3)	R107,R124,R135,R151 (0603) R113,R129,R140,R151,R156 (0402)	R108, R152	R110,R123, R136,R150	R111, R154	R112,R127, R138,R153	U25,U28
-A	LTC2348-18	8	0.1uF	270pF	270pF	STUFF	0	0	100	100	OPT	OPT	LT1355CS8
-B	LTC2347-18	4	0.1uF	270pF	OPT	STUFF	0	0	100	OPT	OPT	0	LT1355CS8
-C	LTC2343-18	2	OPT	OPT	OPT	OPT	0	OPT	OPT	OPT	0	0	OPT
-D	LTC2348-16	8	0.1uF	270pF	270pF	STUFF	OPT	0	100	100	OPT	OPT	LT1355CS8
-E	LTC2347-16	4	0.1uF	270pF	OPT	STUFF	OPT	0	100	OPT	OPT	0	LT1355CS8
-F	LTC2343-16	2	OPT	OPT	OPT	OPT	OPT	OPT	OPT	OPT	0	0	OPT

NOTES: UNLESS OTHERWISE SPECIFIED

1. ALL RESISTORS AND CAPACITORS ON THIS PAGE ARE 0402.

CUSTOMER NOTICE

LINEAR TECHNOLOGY HAS MADE A BEST EFFORT TO DESIGN A CIRCUIT THAT MEETS CUSTOMER-SUPPLIED SPECIFICATIONS; HOWEVER, IT REMAINS THE CUSTOMER'S RESPONSIBILITY TO VERIFY PROPER AND RELIABLE OPERATION IN THE ACTUAL APPLICATION. COMPONENT SUBSTITUTION AND PRINTED CIRCUIT BOARD LAYOUT MAY SIGNIFICANTLY AFFECT CIRCUIT PERFORMANCE OR RELIABILITY. CONTACT LINEAR TECHNOLOGY APPLICATIONS ENGINEERING FOR ASSISTANCE.

THIS CIRCUIT IS PROPRIETARY TO LINEAR TECHNOLOGY AND SUPPLIED FOR USE WITH LINEAR TECHNOLOGY PARTS.

APPROVALS

PCB DES.	KIM T.
APP ENG.	GUY H.
SCALE	NONE

1630 McCarthy Blvd.
Milpitas, CA 95035
Phone: (408)432-1900 www.linear.com
Fax: (408)434-0507
LTC Confidential-For Customer Use Only

TITLE: SCHEMATIC	
8/4/2-CHANNEL, SOFTSPAN, HIGH SPEED, SERIAL, SAR, ADC	
SIZE B	IC NO. LTC23XXILX FAMILY DEMO CIRCUIT 2094A
DATE: 04/02/2015, 10:19 AM	REV. 2

SHEET 4 OF 4